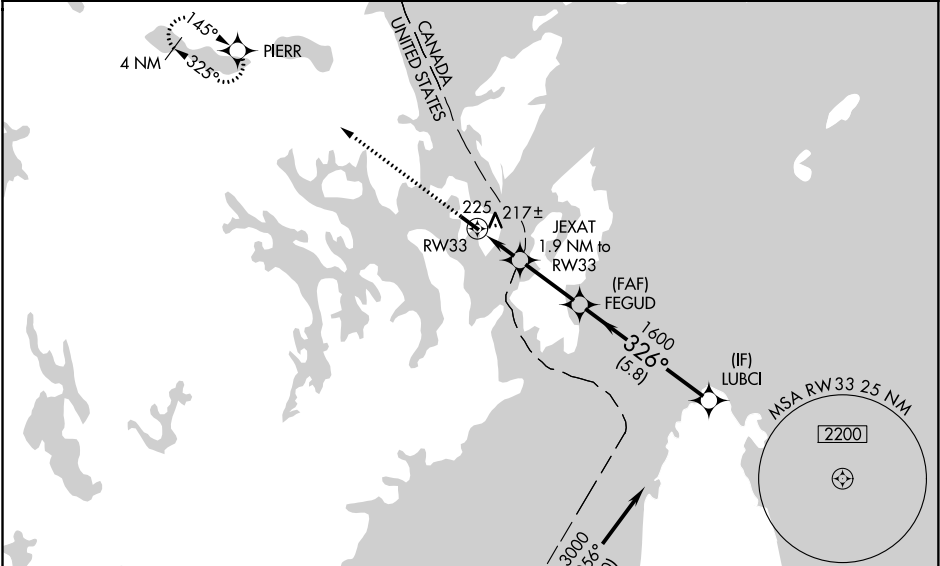


WAAS CH 78340 W33A	APP CRS 326°	Rwy Idg 4002 TDZE 45 Apt Elev 45
--	------------------------	---

RNAV (GPS) RWY 33
EASTPORT MUNI (EPM)

RNP APCH. <div>▼ ▲ NA</div> <p>For uncompensated Baro-VNAV systems, LNAV/VNAV NA below -15°C or above 47°C. Rwy 33 helicopter visibility reduction below ¼ SM NA. When local altimeter setting not received, use Hancock County-Bar Harbor altimeter setting: increase LPV DA to 531 feet and all visibilities ½ SM; increase LNAV/VNAV DA to 552 feet and all visibilities ½ SM; increase all MDA 160 feet and visibility Cat C and D ½ SM. VDP and Baro-VNAV NA when using Hancock County-Bar Harbor altimeter setting. Circling Rwy 15 NA at night.</p>	MISSED APPROACH: Climb to 4000 direct PIERR and hold, continue climb-in-hold to 4000.
---	---

AWOS-AV 122.8	BOSTON CENTER 124.25 290.5	UNICOM 122.8 (CTAF) 0
-------------------------	--------------------------------------	---------------------------------



ELEV 45		TDZE 45	
▲ 250±			
VGSI and RNAV glidepath not coincident (VGSI Angle 3.28/TCH 44). LUBCI			
*LNAV only			
*1.1 NM to RW33			
*720			
GP 3.10° TCH 57			
-1.1 NM - 0.8 NM - 2.7 NM - 5.8 NM			
CATEGORY	A	B	C
LPV DA	378-1	333 (400-1)	
LNAV/VNAV DA	386-1	341 (400-1)	
LNAV MDA	480-1	435 (500-1)	480-1¼ 435 (500-1¼)
CIRCLING	580-1	535 (600-1)	580-1½ 720-2¼ 535 (600-1½) 675 (700-2¼)