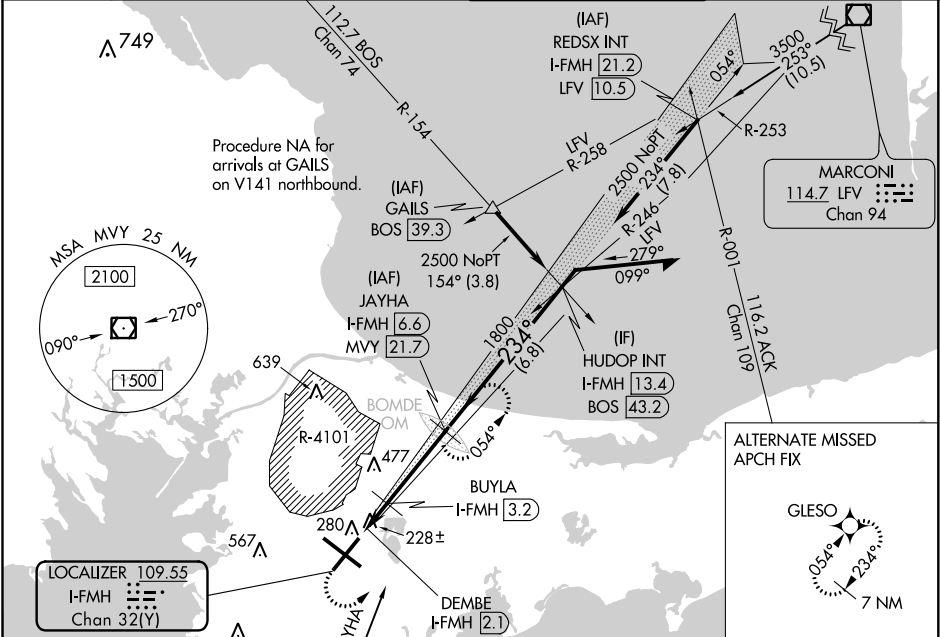


LOC/DME I-FMH	APP CRS	Rwy Idg	8000
109.55	234°	TDZE	126
Chan 32(Y)		Apt Elev	130

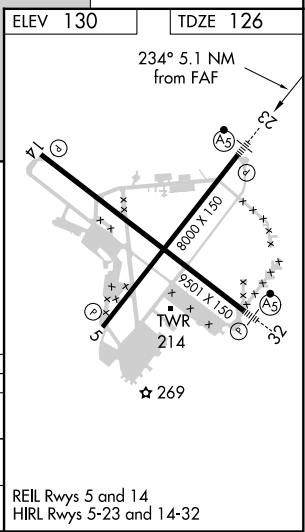
ILS Z or LOC Z RWY 23
CAPE COD COAST GUARD AIR STATION (F'MH)

DME required.	MALSR	MISSED APPROACH: Climb to 1400 then climbing left turn heading 050° and MVY VOR/DME R-036 to 3000 direct JAYHA and hold.
⚠ Circling NA northeast of Rwy 14 and northwest of Rwy 23. For inop ALS, increase S-LOC 23 Cats C/D visibility to RVR 5500. #RVR 1800 authorized with use of FD or AP or HUD to DA.		

ATIS 120.475 236.825	BOSTON APP CON ★ 118.2 284.6	COAST GUARD TOWER 128.425 291.1	GND CON 124.15 275.8
-------------------------	---------------------------------	------------------------------------	-------------------------



1400	3000	MVY	JAYHA	JAYHA	Remain
↑	hdg	R-036	I-FMH	I-FMH	within 10 NM
050°			6.6	6.6	
*LOC only.			1800	1800	
			054°	234°	
			1800	1800	
			GS 3.00°	TCH 53	
			0.6	1.1 NM	3.4 NM
CATEGORY	A	B	C	D	
S-ILS 23#		326/24	200 (200-½)		
S-LOC 23	480/24	354 (400-½)	480/30	354 (400-¾)	
CIRCLING	580-1 450 (500-1)	640-1 510 (600-1)	900-2¼ 770 (800-2¼)	900-2½ 770 (800-2½)	



NE-1, 31 DEC 2020 to 28 JAN 2021

NE-1, 31 DEC 2020 to 28 JAN 2021