

WAAS CH 72815 W19A	APP CRS 193°	Rwy Idg TDZE Apt Elev	8000 74 75
--	------------------------	-----------------------------	---------------------------------------

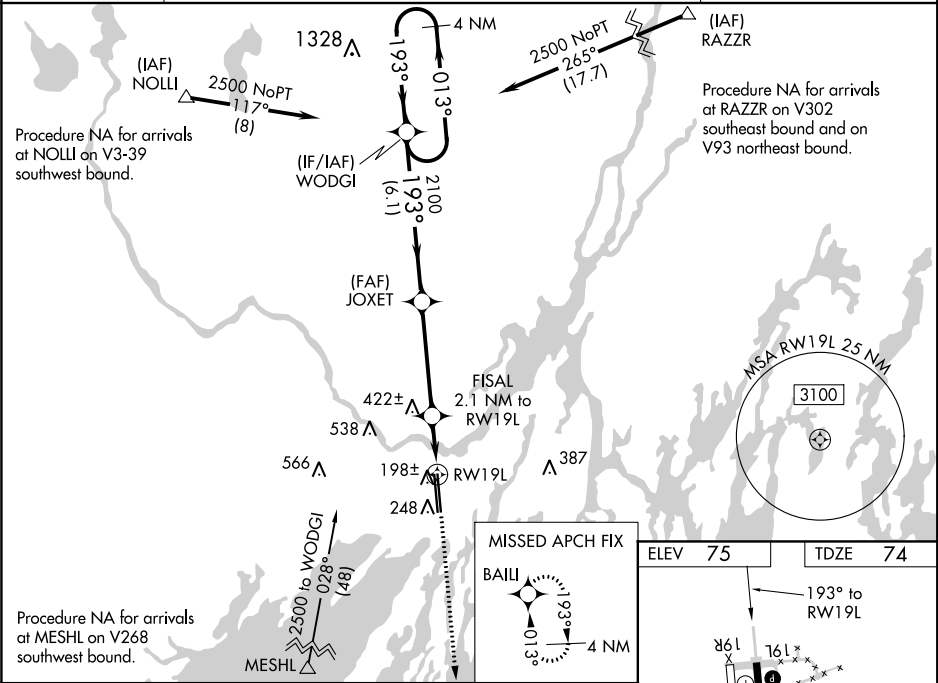
RNAV (GPS) RWY 19L



BRUNSWICK EXECUTIVE (BXM)

NA For uncompensated Baro-VNAV systems, LNAV/VNAV NA below -15°C (5°F) or above 43°C (109°F). Inop table does not apply to LPV all Cats. DME/DME RNP-0.3 NA. Rwy 19L helicopter visibility reduction below ¾ SM NA. Baro-VNAV and VDP NA with Portland altimeter setting. When local altimeter setting not received, use Portland altimeter setting: increase LPV DA to 382 feet and visibility ¼ SM all Cats; increase LNAV/VNAV DA to 410 feet and visibility ¼ SM all Cats; increase all MDAs 60 feet and LNAV Cats C/D visibility ¼ SM.

MISSED APPROACH:
Climb to 2000 direct
BAILI and hold.

AWOS-AV 134.875	PORTLAND APP CON ★ (112°-292°) 119.75 269.35 (293°-111°) 120.4 299.2	UNICOM 122.725 (CTAF) 0
---------------------------	---	--



4 NM Holding Pattern		WODGI	JOXET	FISAL 2.1 NM to RW19L	2000 ↑	BAILI 
2500 ← 013° 193° →		193°	2100	*1.1 NM to RW19L	*LNAV only.	
GP 3.00° TCH 53		2100		*780		
		6.1 NM		4.1 NM	1 NM	1.1 NM
CATEGORY		A	B	C	D	
LPV DA		331-3/4		257 (300-3/4)		
LNAV/VNAV DA		359-7/8		285 (300-7/8)		
LNAV MDA		460-1	386 (400-1)	460-1 1/8	386 (400-1 1/8)	
CIRCLING		560-1	485 (500-1)	560-1 1/2 485 (500-1 1/2)	640-2 565 (600-2)	

