


ILS RWY 1 (SA CAT II)
ALBANY INTL (ALB)

MALSR

MISSED APPROACH: Climb to 800 then climbing right turn to 5000 and on CAM VOR/DME R-251 to CAM VOR/DME and hold.

[illegible]

MARIA
 ALB 19
 115.3 ALB
 Chan 100
 R-299
 119°
 299°

ALBANY
115.3 ALB 
Chen 100

FLEIG
I-DEJ 6.5
RADAR

DME or RADAR REQUIRED

A 2294

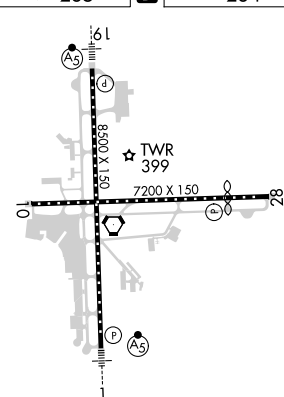
1934 A

(IF/IAF)
MUJIK
I-DEJ 12.5
RADAR

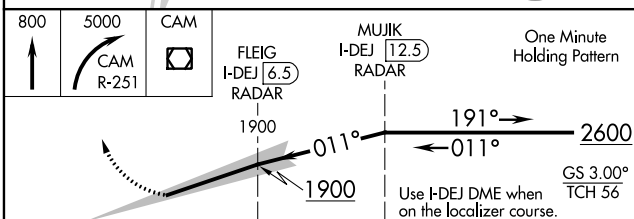
(IYIYO) -

Procedure NA for arrivals at CIRRU on V91 southbound

ELEV 285	D	TDZE 284
----------	----------	----------



TDZ/CL Rwy 1 and 19
HIRL Rwy 1-19
MIRL Rwy 10-28
REIL Rwy 10 and 28



CATEGORY	A	B	C	D
S-ILS 1	RA 100/12 100 DA 384			

SA CATEGORY II ILS - SPECIAL AIRCREW
& AIRCRAFT CERTIFICATION REQUIRED