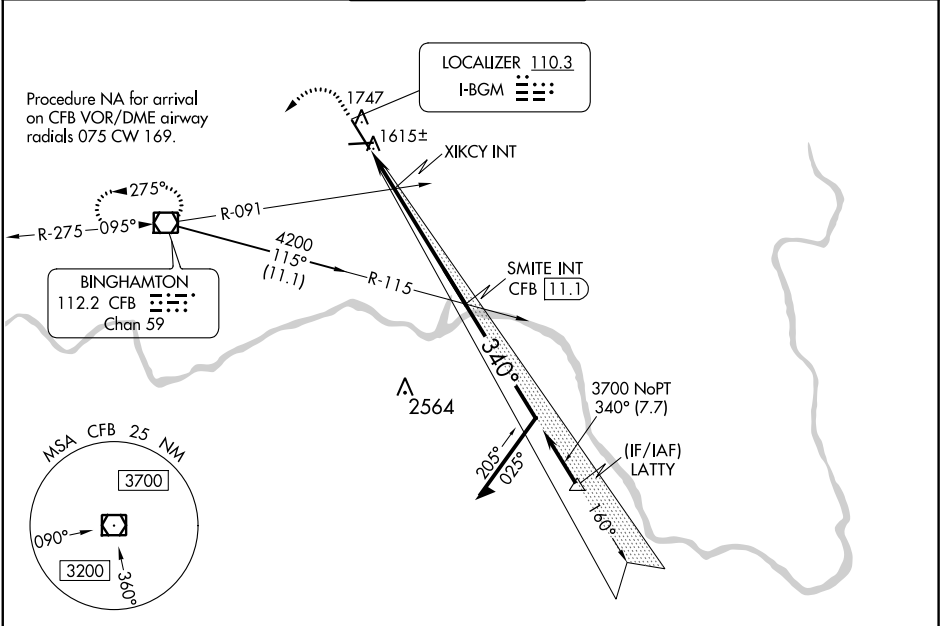


LOC I-BGM 110.3	APP CRS 340°	Rwy Idg TDZE Apt Elev 7100 1601 1636
---------------------------	------------------------	--

ILS or LOC RWY 34

GREATER BINGHAMTON/EDWIN A LINK FIELD (BGM)

<div><div>▼</div><div>▲</div></div>		<div><div>MALSR</div><div></div></div>		<div><div>MISSED APPROACH:</div><div>Climb to 2200 then climbing left turn to 3900 direct CFB VOR/DME and hold, continue climb-in-hold to 3900.</div></div>		
<div>ATIS 128.15</div>	<div>BINGHAMTON APP CON ★ 118,6 257.625</div>	<div>BINGHAMTON TOWER ★ 119.3 (CTAF) 0 239.25</div>	<div>GND CON 121.9</div>	<div>CLNC DEL 125.05</div>	<div>UNICOM 122.95</div>	



ELEV 1636

D

TDZE 1601

2200

3900

CFB

* LOC only.

* 2180 when using Ithaca altimeter setting.

SMITE INT

3700

160°

3700

340°

3700

GS 3.00°

TCH 44

VGSI and ILS glidepath not coincident (VGSI Angle 3.00/TCH 64).

XIKCY INT

2040*

1.7 NM

4.9 NM

CATEGORY	A	B	C	D
S-ILS 34	1851/24 250 (300-½)			
S-LOC 34	2040/24 439 (500-½)		2040/40 439 (500-¾)	
CIRCLING	2120-1 484 (500-1)		2120-1½ 2200-2 484 (500-1½) 564 (600-2)	
XIKCY FIX MINIMUMS				
S-LOC 34	1940/24 339 (400-½)		1940/26 339 (400-½)	
CIRCLING	2120-1 484 (500-1)		2120-1½ 2200-2 484 (500-1½) 564 (600-2)	

REIL Rwy 28

MIRL Rwy 10-28

HIRL Rwy 16-34

340° 6.6 NM from FAF

FAF to MAP 6.6 NM

Knots

60 90 120 150 180

Min:Sec

6:36 4:24 3:18 2:38 2:12