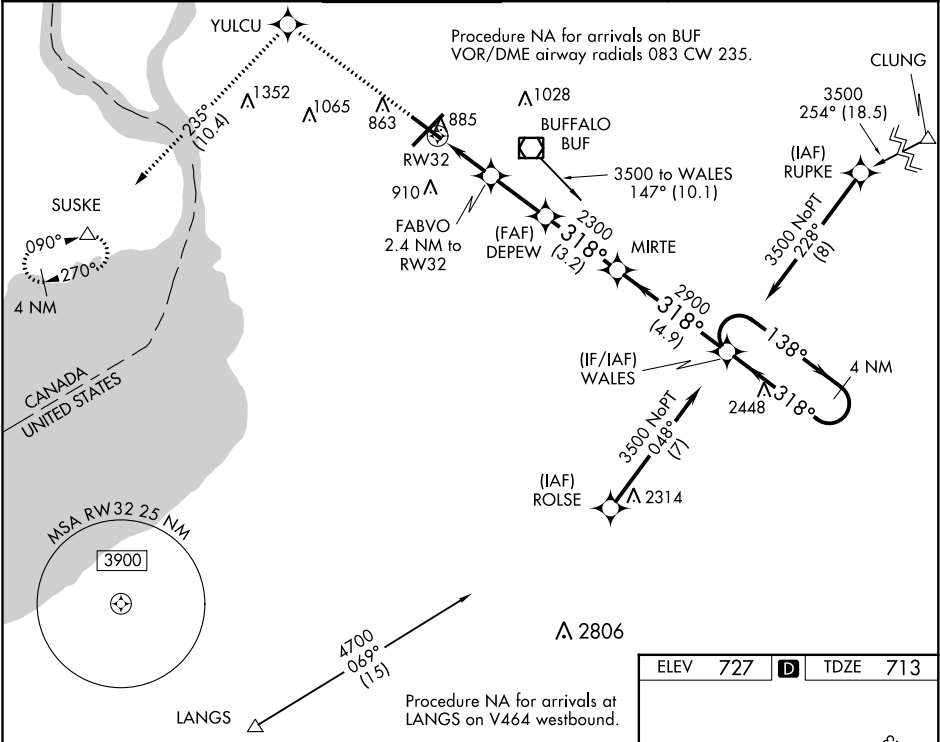


WAAS CH <b>81811</b> <b>W32A</b>	APP CRS <b>318°</b>	Rwy Idg TDZE Apt Elev	<b>6121</b> <b>713</b> <b>727</b>
--	------------------------	-----------------------------	---

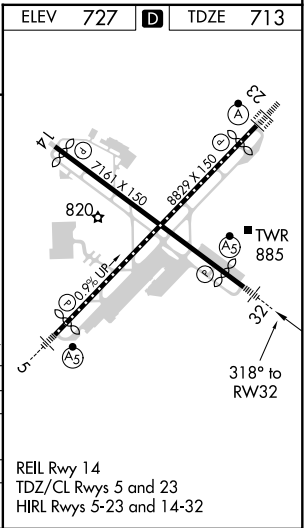
**RNAV (GPS) RWY 32**  
BUFFALO NIAGARA INTL (BUF')

 For uncompensated Baro-VNAV systems LNAV/VNAV NA below -17°C (2°F) or above 39°C (102°F). DME/DME RNP-0.3 NA. Visibility reduction by helicopters NA. For inop MALSR, increase LNAV/VNAV, all Cats visibility to 1½ mile. Inop table does not apply to LPV all Cats.	 MISSED APPROACH: Climb to 3000 direct YULCU on track 235° to SUSKE and hold.
--	--

D-ATIS <b>135.35</b>	BUFFALO APP CON <b>126.15 263.125</b>	BUFFALO TOWER <b>120.5 257.8</b>	GND CON <b>133.2 257.8</b>	CLNC DEL <b>124.7 257.8</b>	CPDLC
-------------------------	--	-------------------------------------	-------------------------------	--------------------------------	-------



3000	YULCU	tr 235°	SUSKE	4 NM Holding Pattern
* LNAV only.				
		FABVO 2.4 NM to RW32	DEPEW 2300	MIRTE 2900
		*1.2 NM to RW32		
				GP 3.00° TCH 54
		1.2 NM	1.2 NM	2.4 NM
				3.2 NM
				4.9 NM
CATEGORY	A	B	C	D
LPV DA		913-¾	200 (200-¾)	
LNAV/ VNAV DA		1092-¾	379 (400-¾)	
LNAV MDA		1140-¾	427 (500-¾)	
CIRCLING	1200-1	473 (500-1)	1220-1½ 493 (500-1½)	1340-2 613 (700-2)



NE-2, 31 DEC 2020 to 28 JAN 2021

NE-2, 31 DEC 2020 to 28 JAN 2021