

| | | |
|---------|----------|------|
| APP CRS | Rwy Idg | 7569 |
| 055° | TDZE | 708 |
| | Apt Elev | 727 |

RNAV (RNP) Z RWY 5

BUFFALO NIAGARA INTL (BUF)

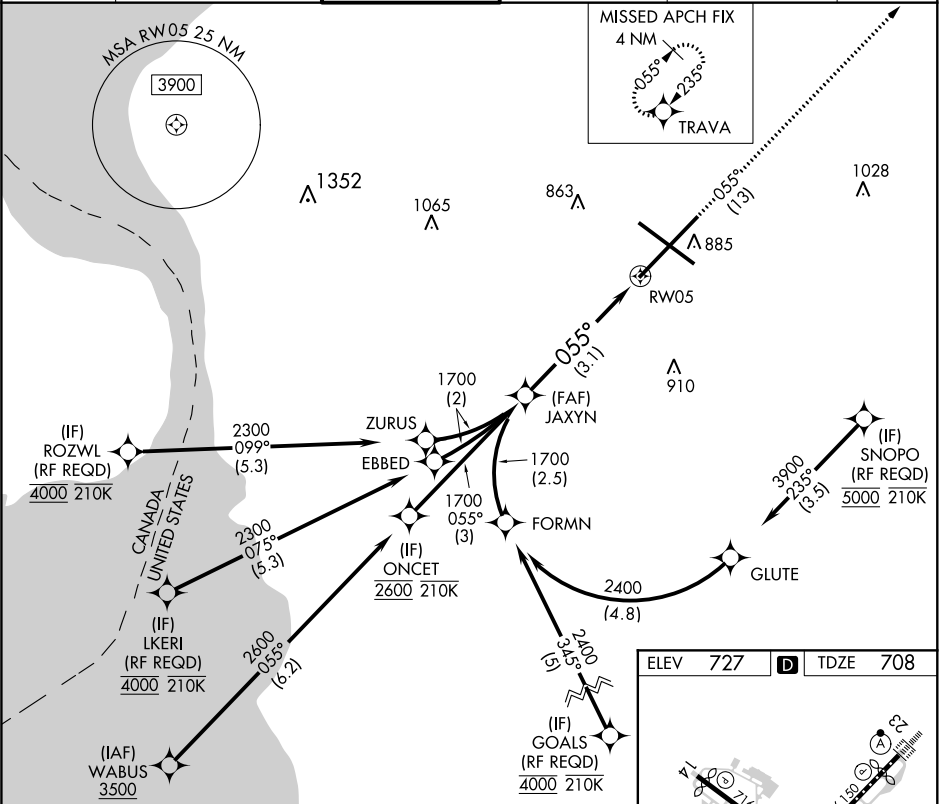
▼

For uncompensated Baro-VNAV systems, procedure below -18°C (0°F) or above 54°C (130°F). GPS required. For inoperative MALSR, increase RNP 0.10 all Cats visibility to 1¼ . For inoperative MALSR, increase RNP 0.30 all Cats visibility to 1½.

MALSR

MISSED APPROACH: Climb to 3000 on the RNAV missed approach route to TRAVA and hold.

| | | | | | |
|--------|-----------------|---------------|-------------|-------------|-------|
| D-ATIS | BUFFALO APP CON | BUFFALO TOWER | GND CON | CLNC DEL | CPDLC |
| 135.35 | 126.15 263.125 | 120.5 257.8 | 133.2 257.8 | 124.7 257.8 | |



JAXYN

See planview for multiple IF locations

3000

TRAVA

1700

GP 3.00°

TCH 46

055°

RW05

3.1 NM

| CATEGORY | A | B | C | D |
|-------------|----------------------|---|---|---|
| RNP 0.10 DA | 1065/45 357 (400-¾) | | | |
| RNP 0.30 DA | 1159/60 451 (500-1¼) | | | |

AUTHORIZATION REQUIRED

ELEV 727 D TDZE 708

REIL Rwy 14
TDZ/CL Rwys 5 and 23
HIRL Rwys 5-23 and 14-32