

LOC I-UEK	APP CRS	Rwy ldg	7401
109.1	062°	TDZE	944
		Apt Elev	955

ILS or LOC RWY 6

ELMIRA/CORNING RGNL (ELM)

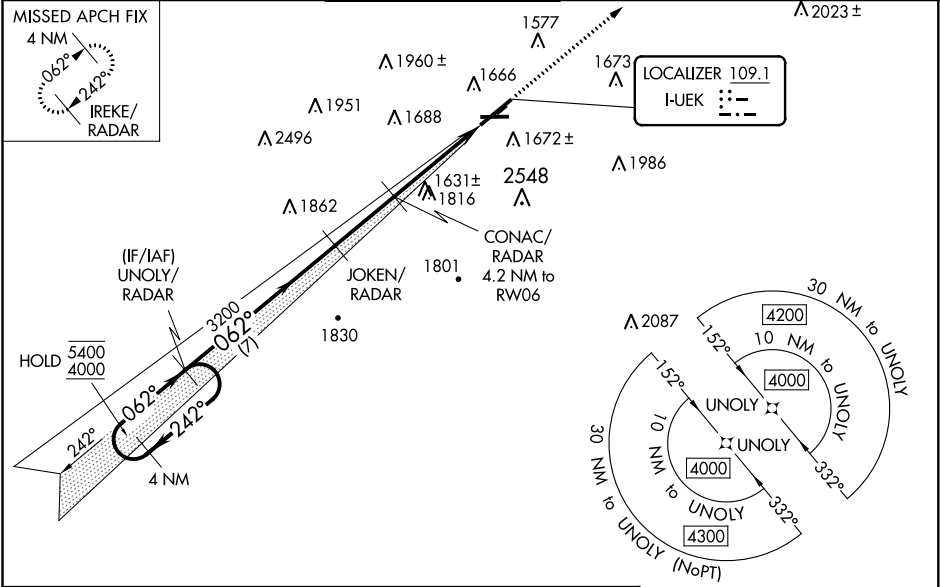
RADAR required to define JOKEN, CONAC. RNAV 1-GPS required for procedure entry.
RNAV 1-GPS required from MAP to IREKE.

⚠ Inop table does not apply to S-LOC 6 Cats C/D. Circling NA to Rwy's 5 and 23. Circling NA for Cat D south of Rwy's 10 and 28. Circling Rwy 10 NA at night. For inop ALS, increase S-LOC 6 CONAC fix minimums Cats C/D visibility to 2½ SM.
** RVR 1800 authorized with use of FD or AP or HUD to DA.

MALSR

⚠ MISSED APPROACH: Climb to 4000 direct IREKE/RADAR and hold.

ATIS	ELMIRA APP CON *	ELMIRA TOWER *	GND CON	CLNC DEL	UNICOM
125.475	128.425 257.8	121.1 (CTAF) 0 257.8	121.9	121.9	122.95



4 NM Holding Pattern

UNOLY/RADAR

JOKEN/RADAR

CONAC/RADAR 4.2 NM to RW06

IREKE/RADAR

4000

5400 4000

242°

062°

062°

3200

GS 3.00° TCH 52

7 NM

2.7 NM

4.2 NM

*LOC only

* 2160 when using Penn Yan altimeter setting.

CATEGORY	A	B	C	D
S-ILS 6 **	1144/24 200 (200-½)			
S-LOC 6	2080/40 1136 (1200-¾)	2080/55 1136 (1200-1)	2080-3	1136 (1200-3)
CIRCLING	2080-1¼ 1125 (1200-1¼)	2080-1½ 1125 (1200-1½)	2100-3 1145 (1200-3)	2340-3 1385 (1400-3)
CONAC FIX MINIMUMS				
S-LOC 6	1740/24 796 (800-½)	1740/40 796 (800-¾)	1740-1¾	796 (800-1¼)
CIRCLING	2020-1¼ 1065 (1100-1¼)	2080-1½ 1125 (1200-1½)	2100-3 1145 (1200-3)	2340-3 1385 (1400-3)

ELEV 955 D TDZE 944

HIRL Rwy 6-24

MIRL Rwy 10-28

TWR 1027

5404 X 150

062° 6.9 NM from FAF

FAF to MAP 6.9 NM					
Knots	60	90	120	150	180
Min:Sec	6:54	4:36	3:27	2:46	2:18