

WAAS CH 99527 W24A	APP CRS 242°	Rwy Idg 7799 TDZE 955 Apt Elev 955
--	------------------------	---

RNAV (GPS) RWY 24

ELMIRA/CORNING RGNL (ELM)

V Circling Rwy 10 NA at night. DME/DME RNP-0.3 NA. For uncompensated Baro-VNAV systems, LNAV/VNAV NA below -20°C (-4°F) or above 54°C (130°F). When local altimeter setting not received, use Penn VNAV altimeter setting and increase all DA 73 feet and all MDA 80, and increase LPV all Cats and LNAV Cats C/D visibility ¼ mile and LNAV/VNAV all Cats visibility 1½ mile; inop table does not apply to LNAV/VNAV all Cats; for inop MALSR, increase LPV DA** all Cats visibility to ¾ and LPV all Cats visibility to 1½. Baro-VNAV and VDP NA when using Penn VNAV altimeter setting. For inop MALSR, increase LNAV Cats C/D visibility to 2½ mile. ** Missed approach requires a minimum climb of 260 feet per NM to 2300. **RVR 1800 authorized with use of FD or AP or HUD to DA, NA when using Penn VNAV altimeter setting.

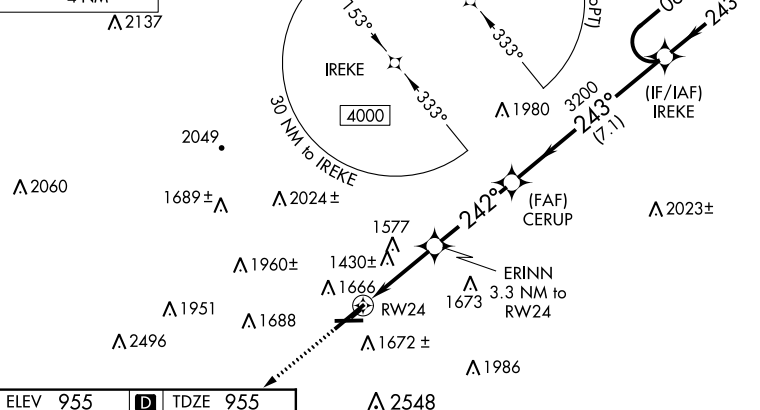
MALSR

MISSED APPROACH:
Climb to 4000 direct
UNOLY and hold.

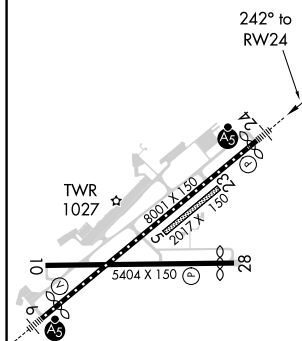
ATIS 125.475	ELMIRA APP CON ★ 128.425 257.8	ELMIRA TOWER ★ 121.1 (CTAF) 0 257.8	GND CON 121.9	CLNC DEL 121.9	UNICOM 122.95
------------------------	--	---	-------------------------	--------------------------	-------------------------

MISSED APCH FIX

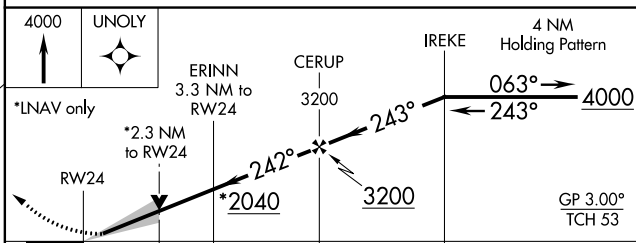
UNOLY



ELEV 955	D	TDZE 955
----------	----------	----------



HIRL Rwy 6-24 **L**
MIRL Rwy 10-28



		2.3 NM	NM	3.6 NM	7.1 NM		
CATEGORY		A		B		C	
LPV	DA **			1155/24		200 (200-½)	
LPV	DA			1348/45		393 (400-¾)	
INAV/ VNAV	DA			1807-2 ½		852 (900-2½)	
INAV	MDA	1740/24 785 (800-½)	1740/40 785 (800-¾)	1740-1 ¾		785 (800-1¾)	
CIRCLING		2100-1 ¼ 1145 (1200-1¼)	2100-1 ½ 1145 (1200-1½)	2120-3 1165 (1200-3)		2160-3 1205 (1300-3)	

RNAV (GPS) RWY 24