

## ILS or LOC RWY 6

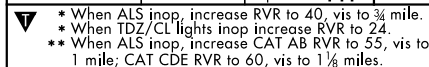
MC GUIRE FLD.

C GUIRE DIX LAKEHURST) (KWRI)

LOC I-WRI <b><u>110.1</u></b>	APCH CRS <b>058°</b>	Rwy Idg <b>10,014</b> TDZE <b>131</b> Arpt Elev <b>141</b>
----------------------------------	-------------------------	--

AL-150 [USAF]

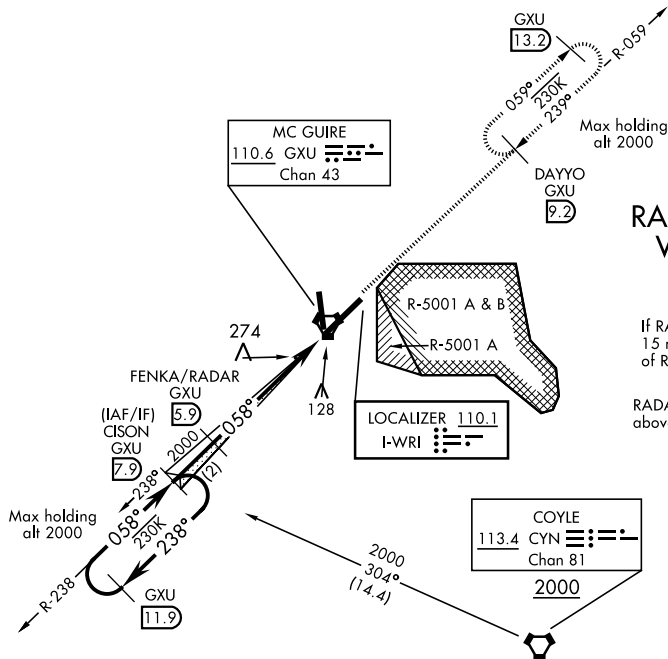
(JOINT BASE MC GUIRE DIX LAKEHURST) (KWRI)



**MISSED APPROACH:** Climb to 2000 via GXU R-059 to DAYYO and hold. Alternate Missed Approach Instruction: Climb to 2000 via GXU R-059 to DAYYO, expect further clearance from ATC.

ATIS 110.6 270.1	MC GUIRE APP CON 126.475 363.8	MC GUIRE TOWER 118.65 255.6	GND CON 121.8 275.8	CLNC DEL 135.2 335.8	PAR
---------------------	-----------------------------------	--------------------------------	------------------------	-------------------------	-----

\*\*\* Circling East of Airfield NA when R-5001 A/B Active.

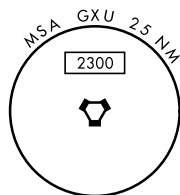


Missed Approach holding at DAYVO NA when R-5001 is active with aerial gunnery.

# RADAR REQUIRED WHEN R-5001 IS ACTIVE

If RADAR inoperative, expect 15 min delay for deactivation of R-5001.

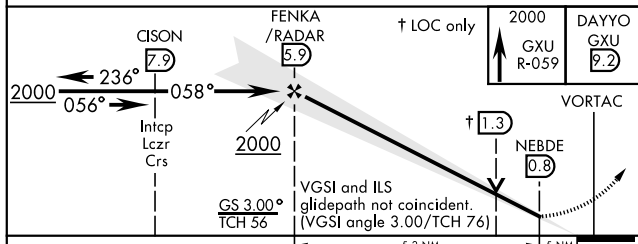
RADAR required for holding  
above 2000 and/or > than 230 KIAS.



## RADAR or DME REQUIRED

(To identify the FAF)

EMERG SAFE ALT 100 NM 5100 FROM GXU VORTAC



CATEGORY	A	B	C	D	E
S-ILS 6 *	331/18 200 (200-½)				
S-LOC 6 **	540/24	409 (400-½)	540/40 409 (400-¾)		
<b>C</b> CIRCLING ***	680-1	539 (600-1)	700-1½ 559 (600-1½)	700-2 559 (600-2)	1200-3 1059 (1100-3)

ELEV 141 TDZE 131

306

81

7.726 x 150

TWR 228

36

10.014 x 150

0.9% DOWN

058° 5.7 NM from FENKA

HIRL all Rwy  
REIL Rwy 18-36  
TDZ/CL Rwy 6

FAF to MAP 5.2 NM

Knots	60	90	120	150	180
Min:Sec	5:12	3:28	2:36	2:05	1:44

WRIGHTSTOWN, NEW JERSEY

40°01'N-74°36'W

MC GUIRE FLD.

Amdt 3 05DEC19

(JOINT BASE MC GUIRE DIX LAKEHURST) (KWRI)

## ILS or LOC RWY 6