

APCH CRS 185°	Rwy Idg 7126 TDZE 123 Arpt Elev 141
------------------	---

AL-150 (USAF)
MC GUIRE FIELD (JOINT BASE MC GUIRE DIX LAKEHURST) (KWRI)

T * Circling East of Airfield NA when R-5001 A/B active.

MISSED APPROACH: Climb to 2000 direct KRIZZ and hold.

ATIS 110.6 270.1	MC GUIRE APP CON 126.475 363.8	TOWER 118.65 255.6	GND CON 121.8 275.8	CLNC DEL 135.2 335.8	PAR
---------------------	-----------------------------------	-----------------------	------------------------	-------------------------	-----

DME/DME RNP-0.3 NA

**RADAR required for
holding above 2000
and/or > 230 KIAS.**

RADAR REQUIRED
WHEN R-5001 IS
ACTIVE AND/OR
R-5002 IS ACTIVE.

If RADAR inoperative, expect 15 min delay for deactivation of R-5001 and/or R-5002.

(IAF/IF)
BINRE

2000
-185
(6)

(FAF)
DUOVR

350
△

RW18

R5001 A & B

R5001

KRIZZ

Min holding
alt 2000

4 NM

Alternate Missed Approach
instructions: Climb to 2000
direct KRIZZ, expect further
clearance from ATC.

Missed approach holding at KRIZZ NA when R-5001 is active with aerial gunnery.

MSA RW18 25 NM

2300

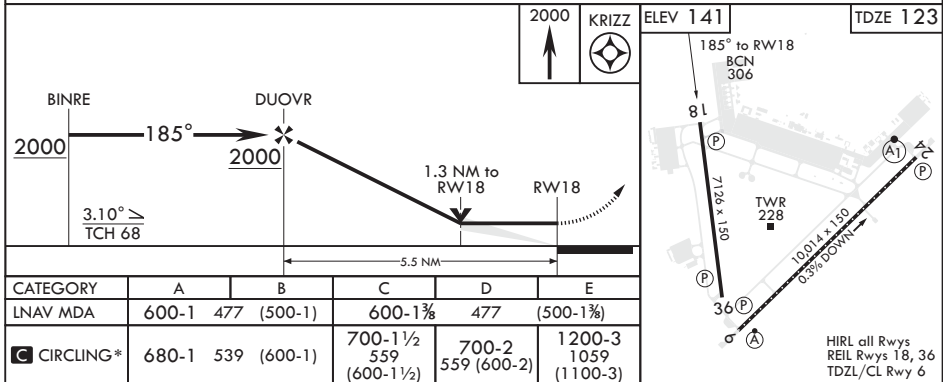
EMERG SAFE ALT 100 NM 5100

2000

KRI77

ELEV 141

TDZE 123



WRIGHTSTOWN, NEW JERSEY

MC GUIRE FIELD (JOINT BASE MC GUIRE DIX LAKEHURST) (KWRI)

Amdt 5 10OCT19

40°01'N - 74°36'W

RNAV (GPS) RWY 18

NE-2, 31 DEC 2020 to 28 JAN 2021