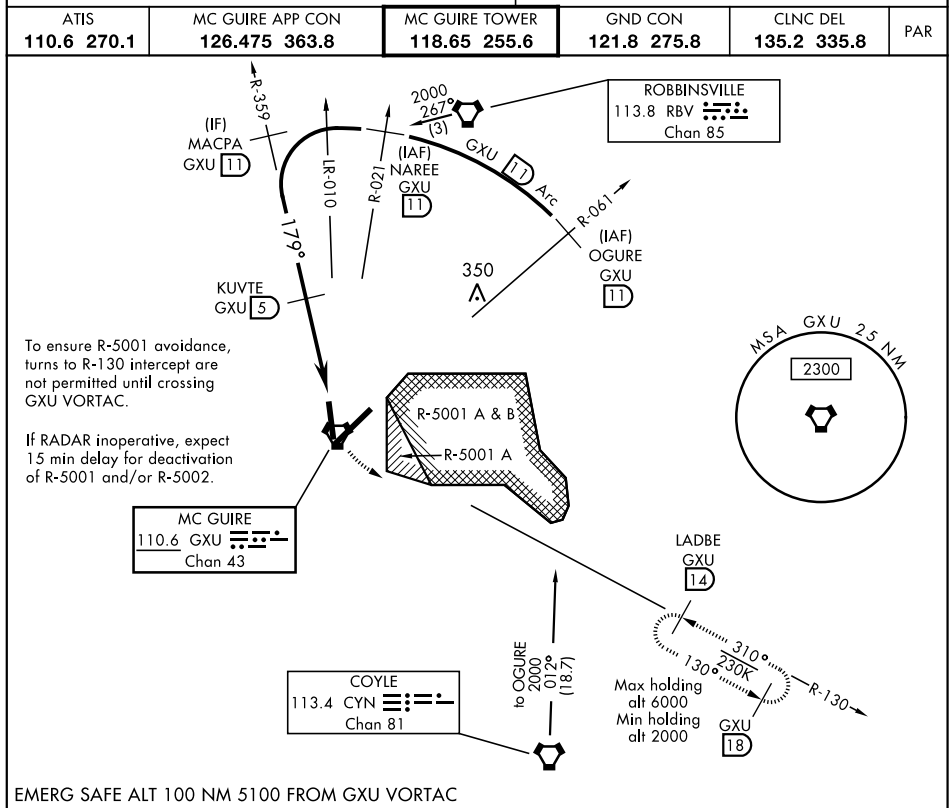


VORTAC GXU 110.6 Chan 43	APCH CRS 179°	Rwy ldg 7126 TDZE 123 Arpt Elev 141	AL-150 [USAF]	(JOINT BASE MC GUIRE DIX LAKEHURST) (KWRI)
--	-------------------------	--	---------------	--

RADAR required when R-5001 and/or R-5002 is active.

▼ * Circling East of airfield NA when R-5001 A/B active.

MISSED APPROACH: Climb to 2000 via GXU VORTAC R-130 to LADBE and hold, DO NOT turn prior to GXU.



EMERG SAFE ALT 100 NM 5100 FROM GXU VORTAC					ELEV 141	TDZE 123
CATEGORY	A	B	C	D	E	
S-18	620-1	497 (500-1)	620-1½	497 (500-1½)		
CIRCLING*	680-1	539 (600-1)	700-1½ 559 (600-1½)	700-2 559 (600-2)	1200-3 1059 (1100-3)	