

WRIGHTSTOWN, NEW JERSEY

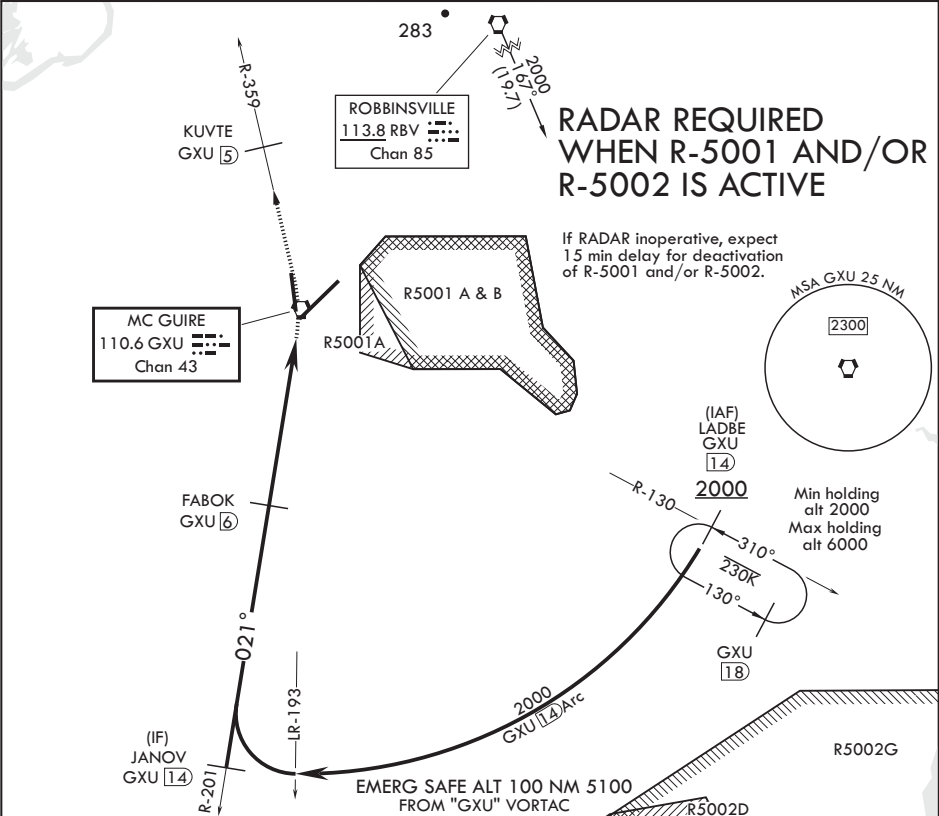
VOR/DME or TACAN RWY 36

VORTAC GXU 110.6 Chan 43	APCH CRS 021°	Rwy Idg TDZE Arpt Elev	7126 129 141
--------------------------------	------------------	------------------------------	--------------------

AL-150 (USAF)  
MC GUIRE FIELD (JOINT BASE MC GUIRE DIX LAKEHURST) (KWRI)

▼ * Circling East of Airfield NA when R-5001 A/B active.	MISSED APPROACH: Climb to 2000 via GXU R-359 to KUVTE, expect further clearance with ATC.
--	---

ATIS 110.6 270.1	MC GUIRE APP CON 126.475 363.8	TOWER 118.65 255.6	GND CON 121.8 275.8	CLNC DEL 135.2 335.8	PAR
---------------------	-----------------------------------	-----------------------	------------------------	-------------------------	-----



LADBE GXU R-130 14		JANOV GXU R-201 14	FABOK GXU 6	GXU 1.4	EBEL GXU 9	GXU VORTAC	KUVTE GXU 5	ELEV 141	TDZE 129
2000		021°	2000	2.92°	TCH 46	5.1 NM	0.8		
CATEGORY	A	B	C	D	E				
S-36	600-1	471 (500-1)	600-1 1/8	471	(500-1 1/8)				
CIRCLING*	680-1	539 (600-1)	700-1 1/2 559 (600-1 1/2)	700-2 559 (600-2)	1200-3 1059 (1100-3)				

WRIGHTSTOWN, NEW JERSEY

Amdt 6 10SEP20

MC GUIRE FIELD (JOINT BASE MC GUIRE DIX LAKEHURST) (KWRI)

40°01'N - 74°36'W

VOR/DME or TACAN RWY 36

NE-2, 31 DEC 2020 to 28 JAN 2021