

WRIGHTSTOWN, NEW JERSEY

VOR/DME or TACAN RWY 6

MC GUIRE FLD,
HURST) (KWRI)

VORTAC GXU 110.6 Chan 43	APCH CRS 044°	Rwy Idg 10,014 TDZE 131 Arprt Elev 141
--	-------------------------	---

AL-150 [USAF]

(JOINT BASE MC GUIRE DIX LAKEHURST) (KWRI)

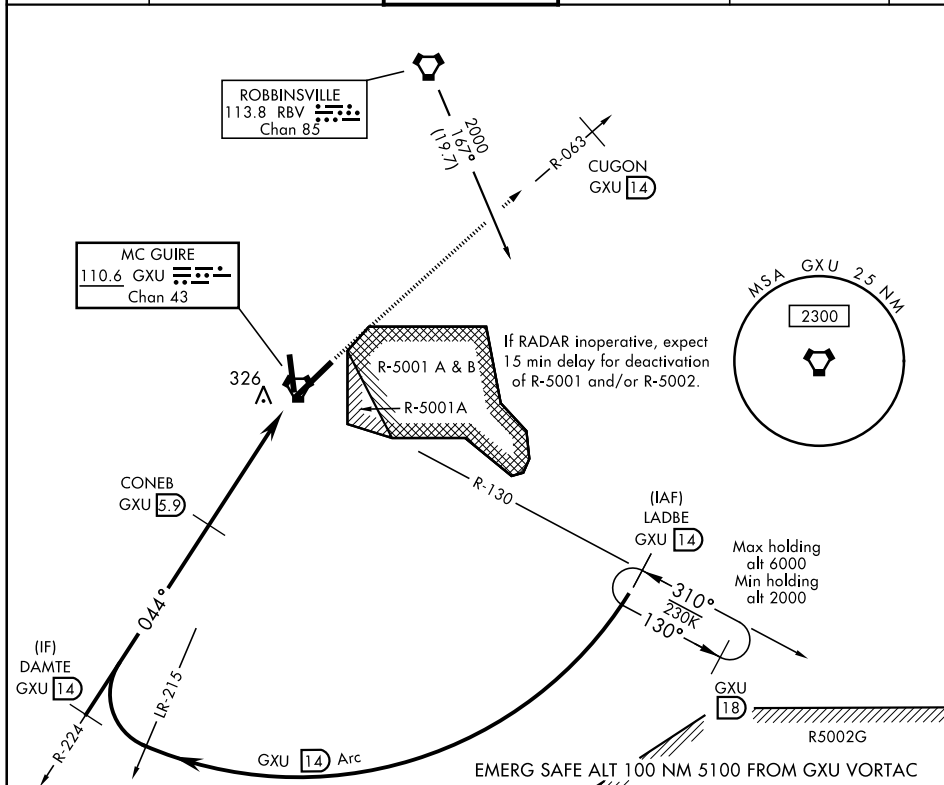
RADAR REQUIRED when R-5001 and/or R-5002 is active.

ALSF-2

MISSED APPROACH: Climb to 2000 via GXU VORTAC R-063 to CUGON, expect further clearance from ATC.



ATIS 110.6 270.1	MC GUIRE APP CON 126.475 363.8	MC GUIRE TOWER 118.65 255.6	GND CON 121.8 275.8	CLNC DEL 135.2 335.8	PAR
---------------------	-----------------------------------	--------------------------------	------------------------	-------------------------	-----



NE-2, 31 DEC 2020 to 28 JAN 2021

Diagram illustrating the HIRL Rwy 18-36 approach, showing the path from the south, passing through the VORTAC and BEMGE, and ending at the runway. Key features include the 044°-045° heading, the 3.01° TCH 76, and the 4.9 NM distance to the runway. The diagram also shows the 2000 ft MSL and the 2000 ft AGL altitudes. The diagram is divided into sections labeled A, B, C, D, and E.

CATEGORY	A	B	C	D	E
S-6 *	640/24	509 (500-1/2)	640/55	509 (500-1)	
C CIRCLING **	680-1	539 (600-1)	700-1 1/2 559 (600-1 1/2)	700-2 559 (600-2)	1200-3 1059 (1100-3)

WRIGHTSTOWN, NEW JERSEY

40°01'N-74°36'W

W MC GUIRE FLD,
(JOINT BASE MC GUIRE DIX LAKEHURST) (KWRI)

Amdt 6 10SEP20

VOR/DME or TACAN RWY 6