

RNAV (GPS) RWY 24

LAKEHURST MAXFIELD FLD,

(JOINT BASE MC GUIRE DIX LAKEHURST) (KNEL)

WAAS Chan 60342 W24A	APCH CRS 242°	Rwy ldg 5002 TDZE 101 Arpt Elev 101
--	-------------------------	--

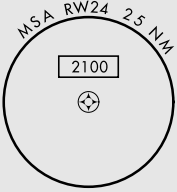
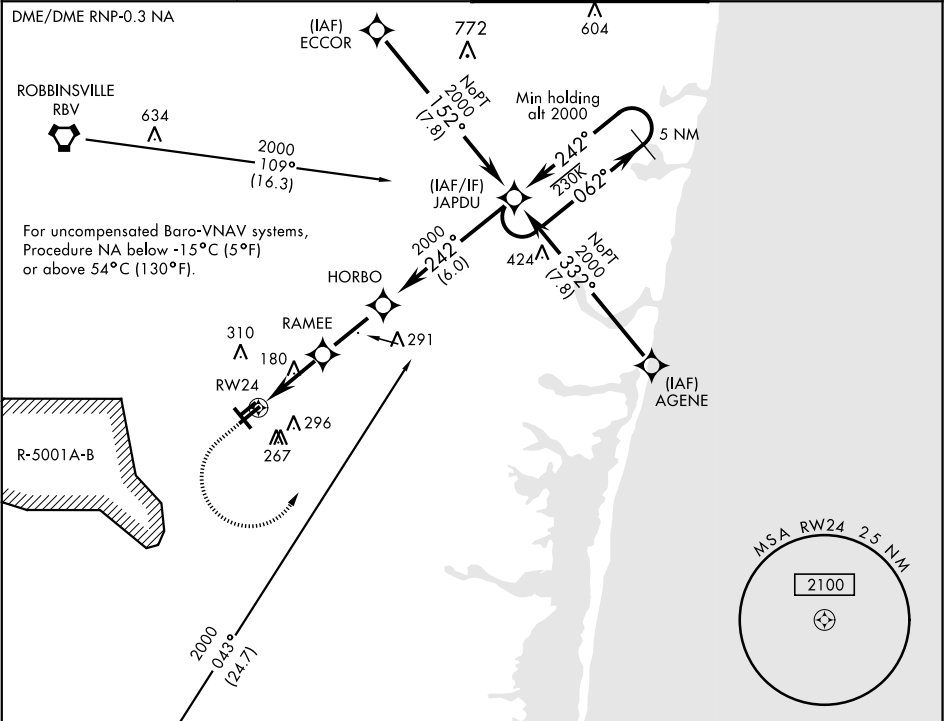
AL-223 [USN]

▼
* When ALS inop, increase vis to ¼ mile.
** When ALS inop, increase CAT ABC vis to 7⁄8 mile;
CAT D vis to 1 mile.
*** When ALS inop, increase vis to 1 mile.

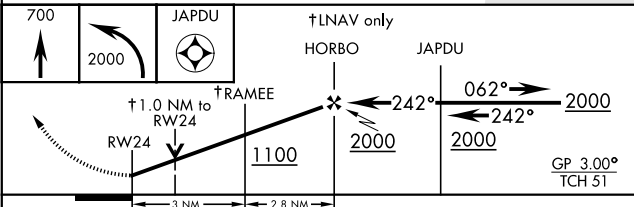


MISSED APPROACH: Climb to 700 then climbing left turn to 2000 direct JAPDU and hold.

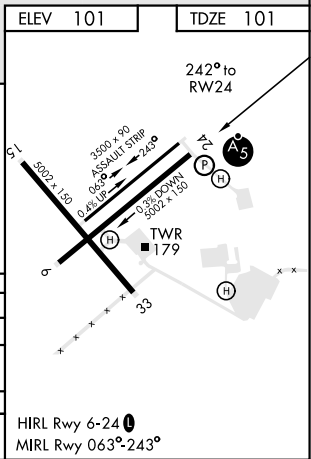
ATIS ★ 276.525	MC GUIRE APP CON 126.475 363.8	LAKEHURST TOWER ★ 127.775 360.2	GND CON 118.375 307.05
--------------------------	--	---	----------------------------------



EMERG SAFE ALT 100 NM 4100



CATEGORY	A	B	C	D
LPV DA *	301-½	200	(200-½)	
LNAB/ VNAV DA **	383-½ 282 (300-½)	403-½ 302 (400-½)	418-½ 317 (400-½)	436-½ 335 (400-½)
LNAB MDA ***	460-½ 640-1	359 (400-½) 720-1	460-5⁄8 720-1¾	359 (400-5⁄8) 720-2
Ⓢ CIRCULING	539 (600-1)	619 (700-1)	619 (700-1¾)	619 (700-2)



RNAV (GPS) RWY 24

NE-2, 31 DEC 2020 to 28 JAN 2021

NE-2, 31 DEC 2020 to 28 JAN 2021