

LAKEHURST, NEW JERSEY

VOR or VOR/DME or TACAN Y RWY 33

LAKEHURST MAXFIELD FLD,

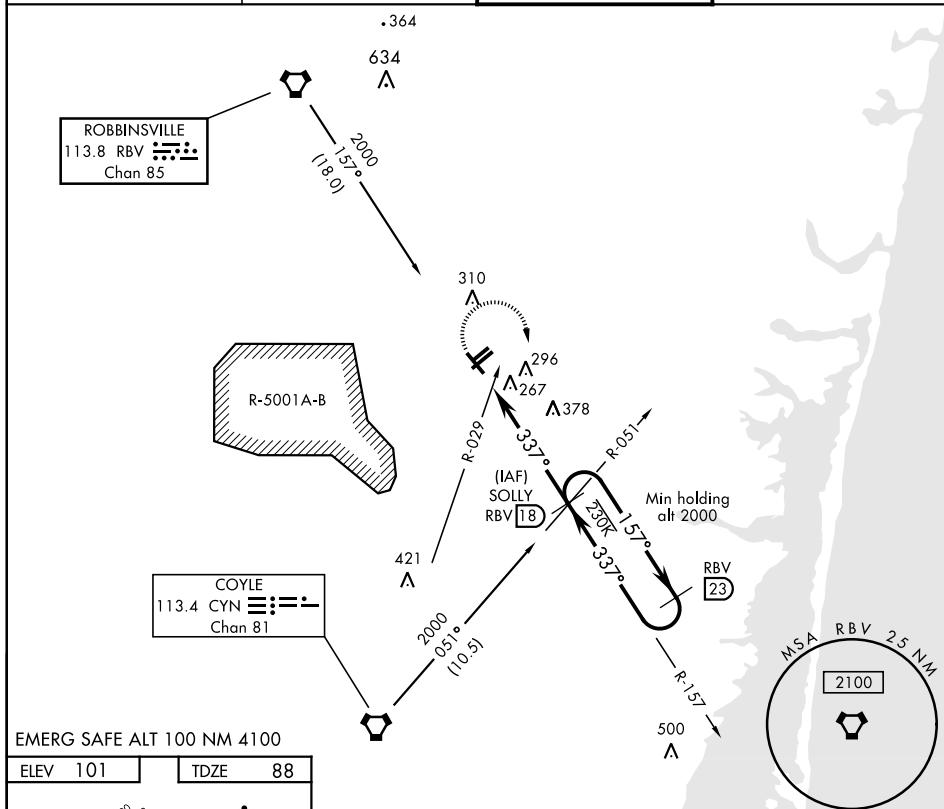
(JOINT BASE MC GUIRE DIX LAKEHURST) (KNEL)

VORTAC RBV 113.8 Chan 85	APCH CRS 337°	Rwy ldg TDZE Arpt Elev 5002 88 101
--	-------------------------	--

AL-223 [USN]

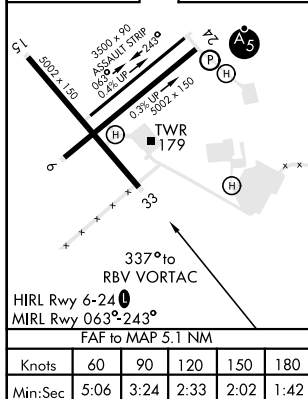
(JOINT BASE MC GUIRE DIX LAKEHURST)

		MISSED APPROACH: Climbing right turn to 2000, intercept RBV VORTAC R-157 to SOLLY and hold.	
ATIS ★ 276.525	MC GUIRE APP CON 126.475 363.8	LAKEHURST TOWER ★ 127.775 360.2	GND CON 118.375 307.05



EMERG SAFE ALT 100 NM 4100

ELEV	101	TDZE	88
------	-----	------	----



2000 RBV R-157 SOLLY RBV [18]		SOLLY RBV R-157 [18] / CYN R-051		RBV R-157 [23]	
VORTAC		TOBME RBV R-157 [12.9] / CYN R-029		157° → 2000 ← 337° 2000 ≤ 3.12° TCH 51	
CATEGORY		A		B	
S-33		660-1 572 (600-1)		660-1 572 (600-1)	
CIRCULING		660-1 559 (600-1)		720-1 619 (700-1)	
660-1 559 (600-1)		720-1 619 (700-1)		720-1 619 (700-1)	
720-2 619 (700-2)		720-2 619 (700-2)		720-2 619 (700-2)	

LAKEHURST, NEW JERSEY

40°02'N-74°21'W

LAKEHURST MAXFIELD FLD,

Amdt 3 30JAN20

(JOINT BASE MC GUIRE DIX LAKEHURST) (KNEL)

VOR or VOR/DME or TACAN Y RWY 33

NE-2, 31 DEC 2020 to 28 JAN 2021