

LOC/DME I-LSQ	APP CRS	Rwy Idg	<b>8207</b>
<b>108.7</b>	<b>219°</b>	TDZE	<b>11</b>
Chan <b>24</b>		Apt Elev	<b>17</b>

ILS RWY 22L (SA CAT I)  
NEWARK LIBERTY INTL (EWR)

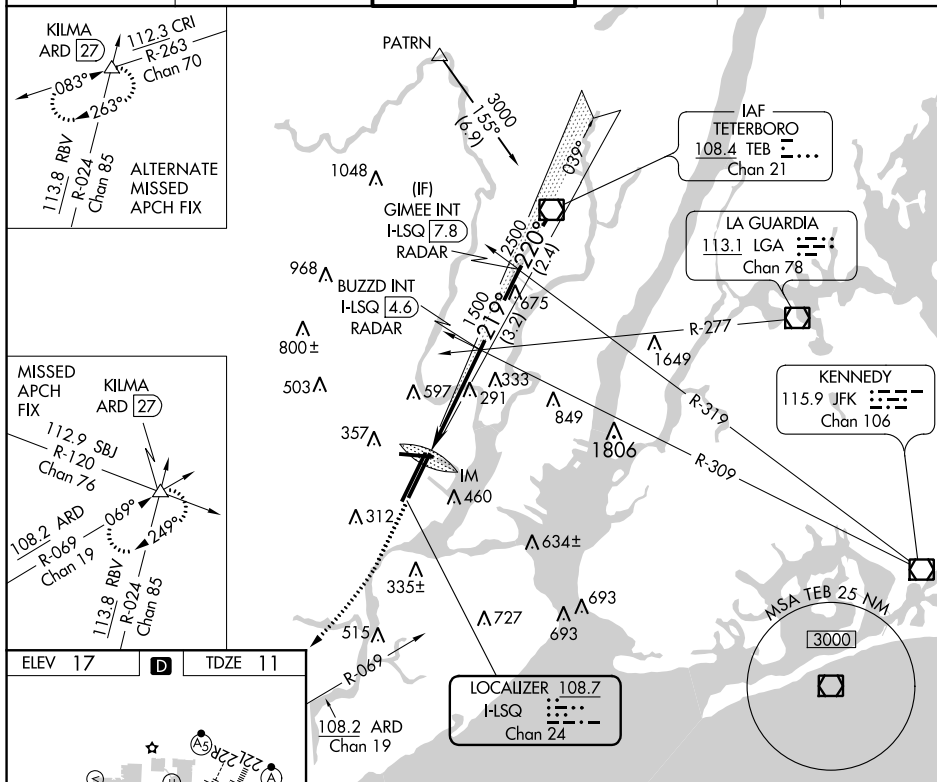
**T** Requires specific OPSPEC, MSPEC, or LOA approval and use of HUD to DH.

ALSF-2



**MISSED APPROACH:** Climb to 500 then climbing right turn to 3000 on heading 225° and ARD VOR/DME R-069 to KILMA INT/ARD 27 DME and hold.

D-ATIS <b>115.7 134.825</b>	NEW YORK APP CON <b>128.55 379.9</b>	NEWARK TOWER <b>118.3 257.6</b>	GND CON <b>121.8</b>	CLNC DEL <b>118.85</b>	CPDLC
--------------------------------	---	------------------------------------	-------------------------	---------------------------	-------



TDZ/CL Rwy 4L, 4R, 11,  
22L, 22R, and 29  
REIL Rwy 11, 22R, and 29  
HIRL Rwy 4L-22R, 4R-22L, and 11-29

SA CATEGORY I ILS - SPECIAL AIRCREW  
& AIRCRAFT CERTIFICATION REQUIRED

NE-2, 31 DEC 2020 to 28 JAN 2021