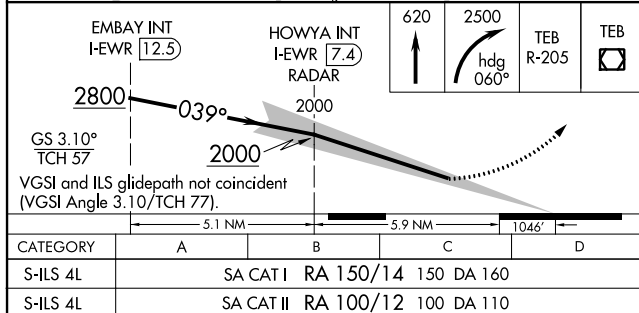
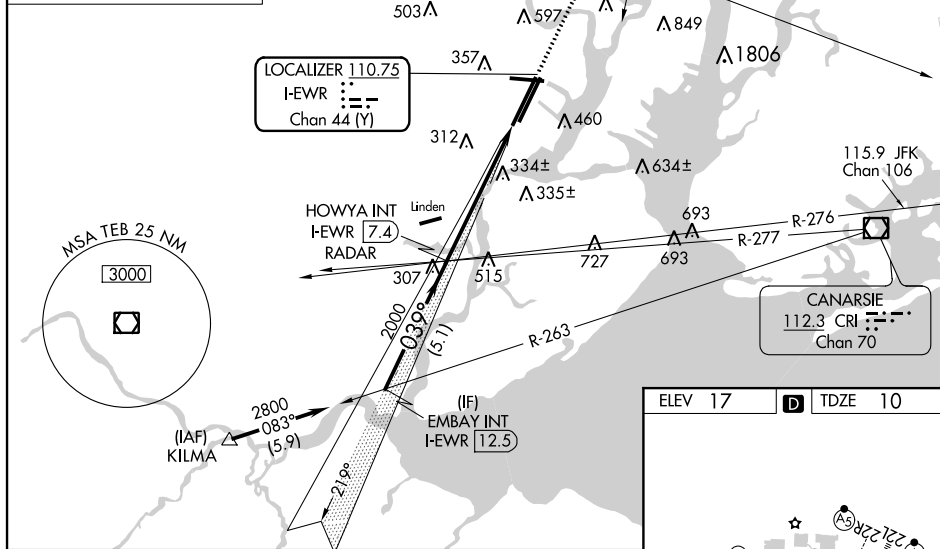


ILS RWY 4L (SA CAT I & II)
NEWARK LIBERTY INTL (EWR)

- MALSR
-  

MISSED APPROACH: Climb to 620 then climbing right turn to 2500 on heading 060° and TEB VOR/DME R-205 to TEB VOR/DME and hold.

[illegible]

SA CATEGORY I & II ILS - SPECIAL AIRCREW
& AIRCRAFT CERTIFICATION REQUIRED

