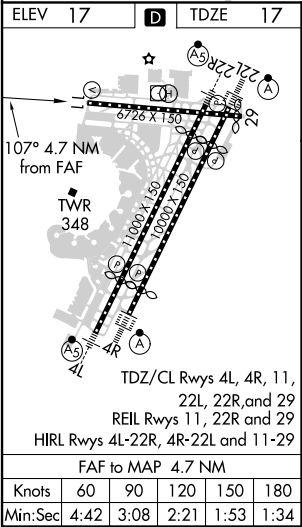
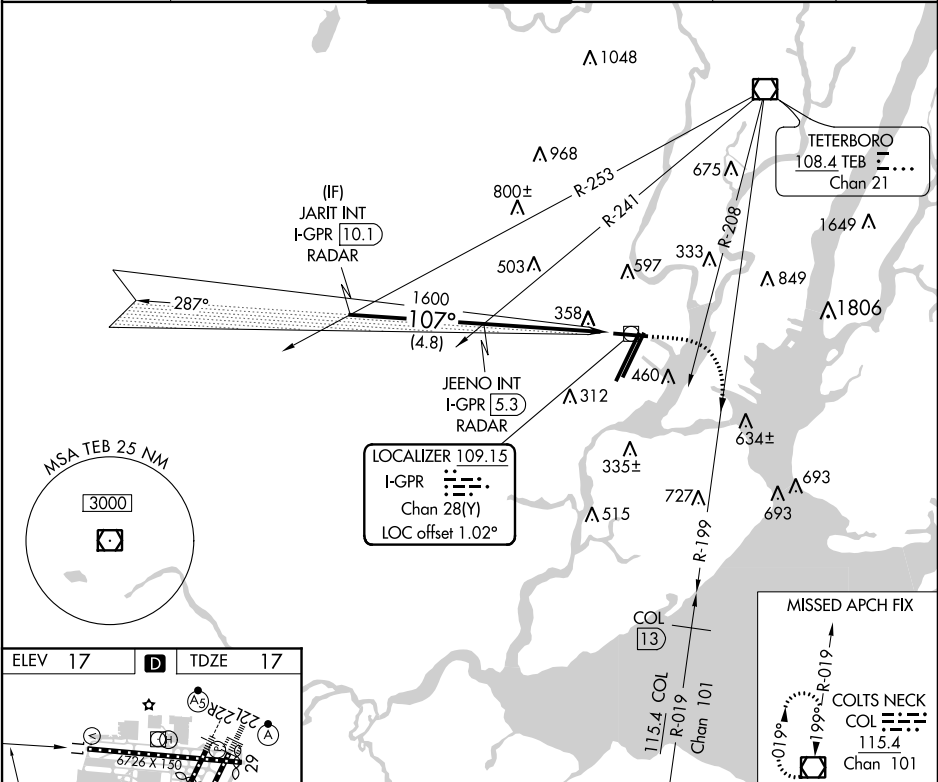


LOC/DME I-GPR	APP CRS	Rwy ldg	6726
109.15	107°	TDZE	17
Chan 28 (Y)		Apt Elev	17

ILS or LOC RWY 11
NEWARK LIBERTY INTL (EWR)

DME required. RADAR required for procedure entry.		MISSED APPROACH: Climb to 1700 heading 107°, at TEB VOR/DME R-208 right turn to intercept TEB VOR/DME R-199 and COL VOR/DME R-019 to COL VOR/DME and hold. At COL 13 DME climb to 3000.			
When Circling to Rwy 29 at night, operational VGSI required, remain on or above VGSI glidepath until threshold.					
D-ATIS	NEW YORK APP CON	NEWARK TOWER	GND CON	CLNC DEL	CPDLC
115.7 134.825	128.55 379.9	118.3 257.6	121.8	118.85	



JARIT INT I-GPR 10.1 RADAR	JEENO INT I-GPR 5.3 RADAR	1700 hdg 107°	TEB R-199 & COL R-019 at TEB R-208	3000 COL 13	COL 115.4 Chan 101
VGSI and ILS glidepath not coincident (VGSI Angle 3.08/TCH 58).					
GS 3.00° TCH 57					
4.8 NM 4.7 NM					
CATEGORY	A	B	C	D	
S- ILS 11	603-2 586 (600-2)				
S- LOC 11	580/50	563 (600-1)	580-1½ 563 (600-1½)	580-1¾ 563 (600-1¾)	
CIRCLING	760-1 743 (800-1)	820-1 803 (900-1)	900-2¾ 883 (900-2¾)	900-3 883 (900-3)	