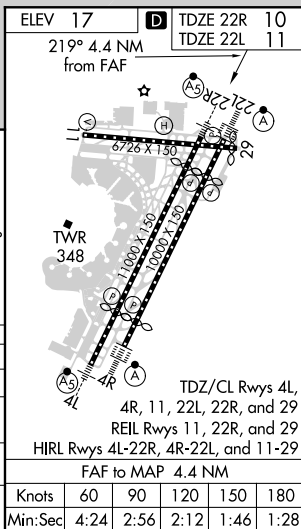
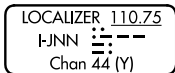



ILS or LOC RWY 22R
NEWARK LIBERTY INTL (EWR)

MISSED APPROACH: Climb to 3000 on heading 219° and on ARD VOR/DME R-069 to KILMA INT/ARD 27 DME and hold.

ALTERNATE MISSED APCH FIX



	1.2	3.2 NM	3.3 NM	2.4 NM	
CATEGORY	A	B	C	D	
S-ILS 22R	210/18 200 (200-½)				
S-LOC 22R	460/24 450 (500-½)		460/45 450 (500-¾)		
SIDESTEP RWY 22L	560/50 549 (600-1)				560-1½ 549 (600-1½)
 CIRCLING	760-1 743 (800-1)	820-1 803 (900-1)	900-2¾ 883 (900-2¾)	900-3 883 (900-3)	

NE-2, 31 DEC 2020 to 28 JAN 2021