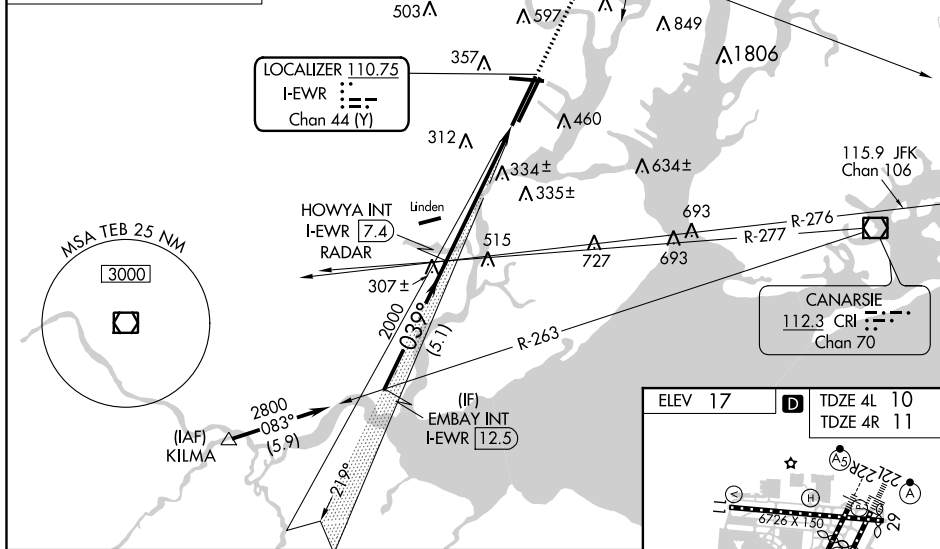


ILS or LOC RWY 4L
NEWARK LIBERTY INTL (EWR)

MISSED APPROACH: Climb to 620 then climbing right turn to 2500 on heading 060° and TEB VOR/DME R-205 to TEB VOR/DME and hold.



FAF to MAP 5.9 NM					
Knots	60	90	120	150	180
Min:Sec	5:54	3:56	2:57	2:22	1:58

NE-2, 31 DEC 2020 to 28 JAN 2021