

WAAS CH 77524 W22B	APP CRS 219°	Rwy Idg TDZE 10 Apt Elev 17
--	------------------------	---

RNAV (GPS) RWY 22R
NEWARK LIBERTY INTL (EWR)

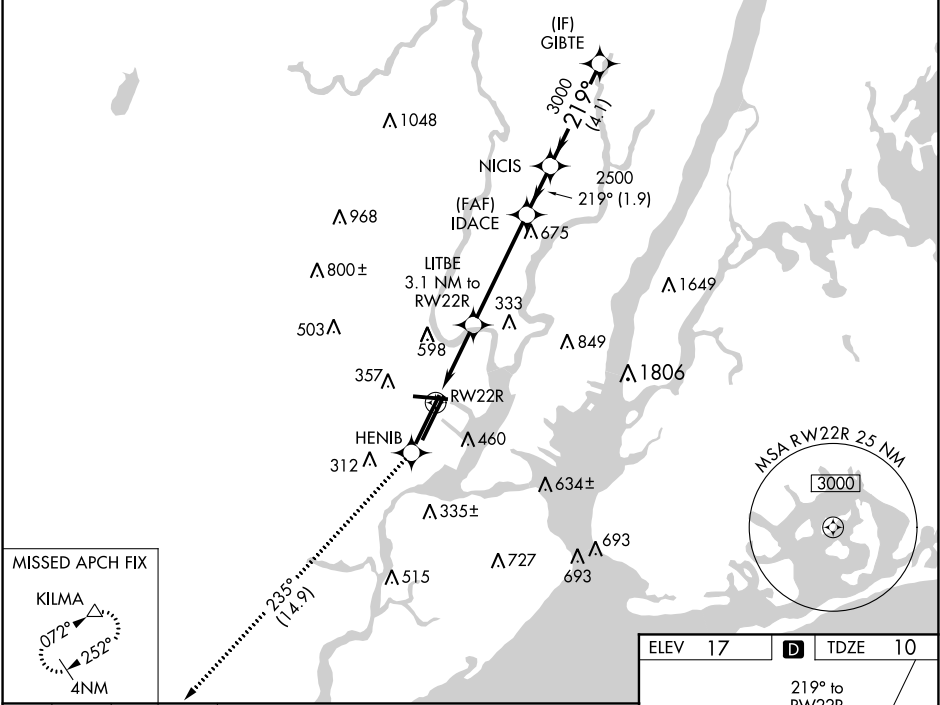
RNP APCH.

For inop ALS, increase LPV visibility to RVR 6000 all Cats. When Circling to Rwy 29 at night, operational VGSI required, remain on or above VGSI glidepath until threshold.

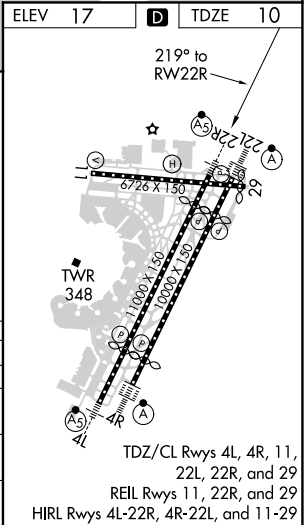


MISSED APPROACH: Climb to 3000 direct HENIB and on track 235° to KILMA and hold.

D-ATIS 115.7 134.825	NEW YORK APP CON 128.55 379.9	NEWARK TOWER 118.3 257.6	GND CON 121.8	CLNC DEL 118.85	CPDLC
--------------------------------	---	------------------------------------	-------------------------	---------------------------	-------



ELEV 17	D	TDZE 10
3000	HENIB	KILMA
↑	tr 235°	△
VGSI and RNAV glidepath not coincident (VGSI Angle 3.10/TCH 70).		
* LNAV only.		
LITBE 3.1 NM to RWY 22R		
* 1.7 NM to RWY 22R		
RWY 22R		
1040 2500 3000		
1.7 NM 1.4 NM 4.4 NM 1.9 NM 4.1 NM		
CATEGORY	A	B C D
LPV DA		361/40 351 (400-¾)
LNAV/VNAV DA		NA
LNAV MDA	620/24 610 (700-½)	620/60 610 (700-¼) 620-1½ 610 (700-1½)
CIRCLING	760-1¼ 743 (800-1¼)	820-1¼ 803 (800-1¼) 900-2¾ 883 (900-2¾) 900-3 883 (900-3)



RNAV (GPS) RWY 22R

NE-2, 31 DEC 2020 to 28 JAN 2021

NE-2, 31 DEC 2020 to 28 JAN 2021