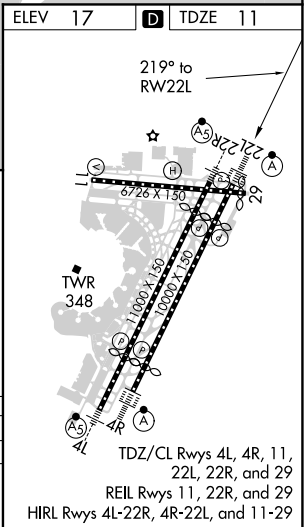
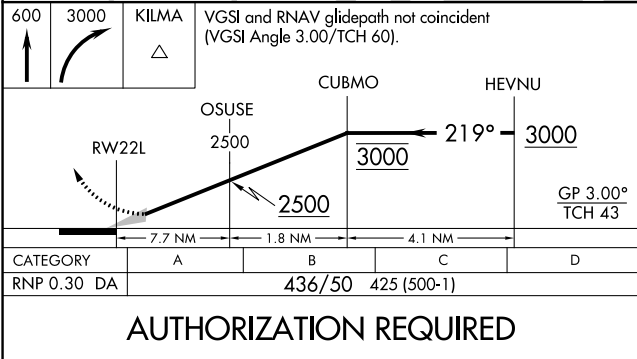
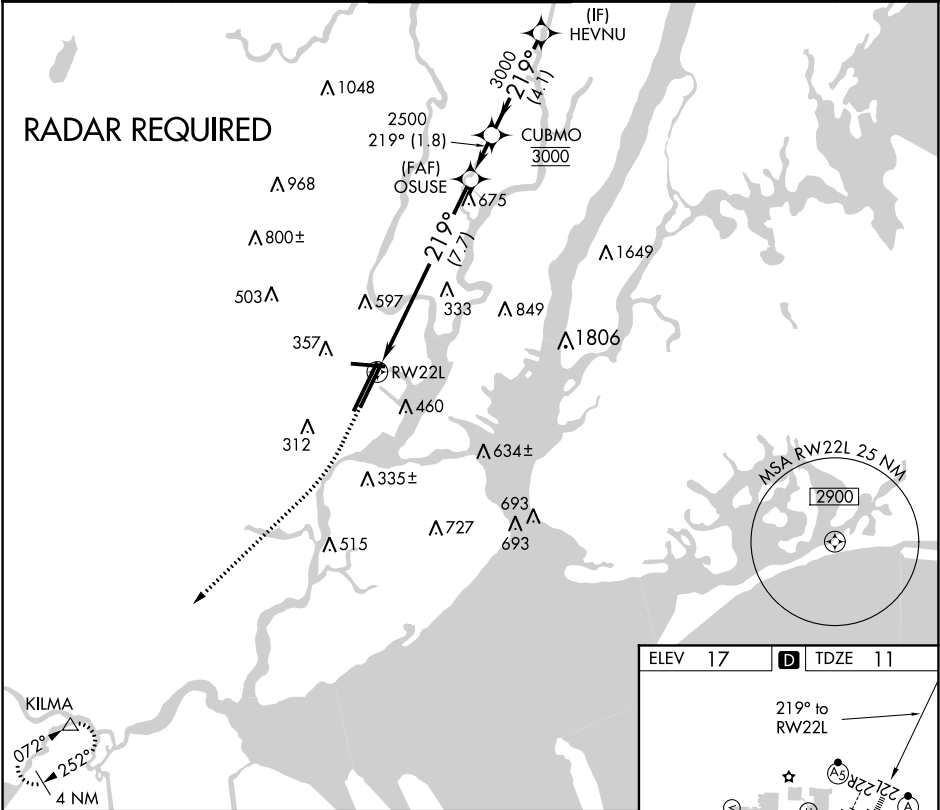


APP CRS	Rwy Idg	8207
219°	TDZE	11
	Apt Elev	17

RNAV (RNP) Y RWY 22L
NEWARK LIBERTY INTL (EWR)

<div><div></div><div>For uncompensated Baro-VNAV systems, procedure NA below -13°C (9°F) or above 54°C (130°F). GPS required.</div></div>		<div>ALSF-2</div> <div><div></div></div>	MISSED APPROACH: Climb to 600 then climbing right turn to 3000 direct KILMA and hold.		
D-ATIS	NEW YORK APP CON	NEWARK TOWER	GND CON	CLNC DEL	CPDLC
115.7 134.825	128.55 379.9	118.3 257.6	121.8	118.85	



RNAV (RNP) Y RWY 22L

NE-2, 31 DEC 2020 to 28 JAN 2021

NE-2, 31 DEC 2020 to 28 JAN 2021