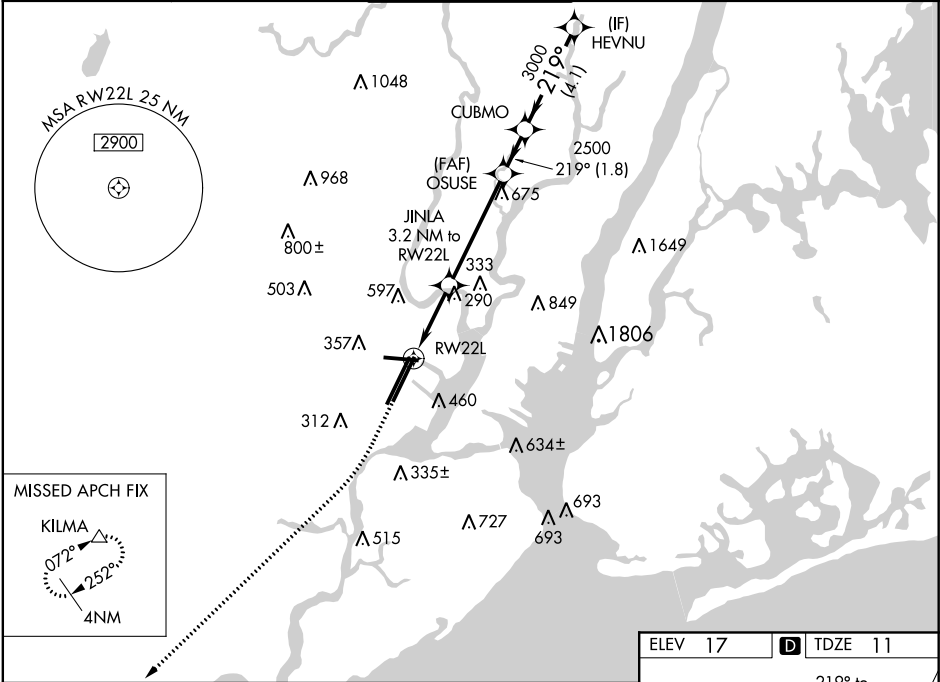


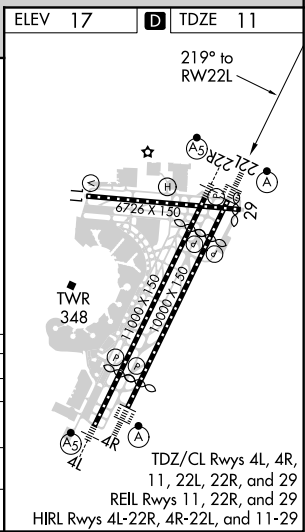
WAAS CH 70324 W22A	APP CRS 219°	Rwy Idg 8207 TDZE 11 Apt Elev 17
--	------------------------	---

RNAV (GPS) Z RWY 22L
NEWARK LIBERTY INTL (EWR)

RNP APCH.		ALSIF-2	MISSED APPROACH: Climb to 600 then climbing right turn to 3000 direct KILMA and hold.		
For uncompensated Baro-VNAV systems, LNAV/VNAV NA below -13°C or above 54°C. For inop ALS, increase LNAV/VNAV all Cats visibility to 1½ mile. When Circling to Rwy 29 at night, operational VGSI required, remain on or above VGSI glidepath until threshold.					
D-ATIS 115.7 134.825	NEW YORK APP CON 128.55 379.9	NEWARK TOWER 118.3 257.6	GND CON 121.8	CLNC DEL 118.85	CPDLC



600 3000 KILMA		VGSI and RNAV glidepath not coincident (VGSI Angle 3.00/TCH 60).			
		*LNAV only.			
		JINLA 3.2 NM to RW22L			
RW22L		OSUSE 2500 219°			
1.5 NM		*1080			
1.7 NM		2500			
4.5 NM		CUBMO			
1.8 NM		HEVNU			
4.1 NM		GP 3.00° TCH 43			
CATEGORY	A	B	C	D	
LPV DA	211/18		200 (200-½)		
LNAV/VNAV DA	462/50		451 (500-1)		
LNAV MDA	560/24	549 (600-½)	560/60	549 (600-1¼)	
CIRCLING	760-1 743 (800-1)	820-1 803 (900-1)	900-2¾ 883 (900-2¾)	900-3 883 (900-3)	



RNAV (GPS) Z RWY 22L

NE-2, 31 DEC 2020 to 28 JAN 2021

NE-2, 31 DEC 2020 to 28 JAN 2021