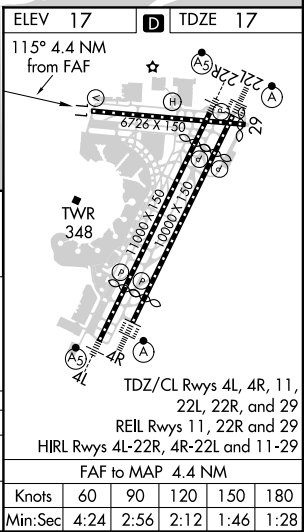
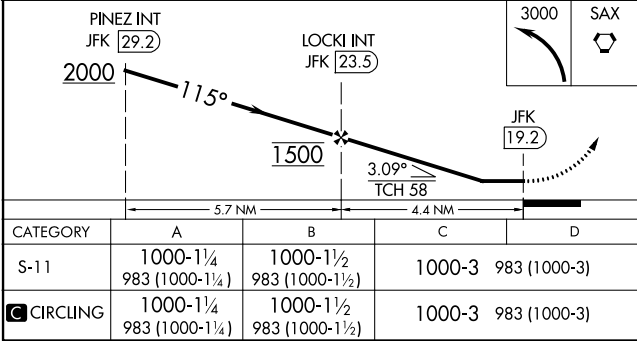
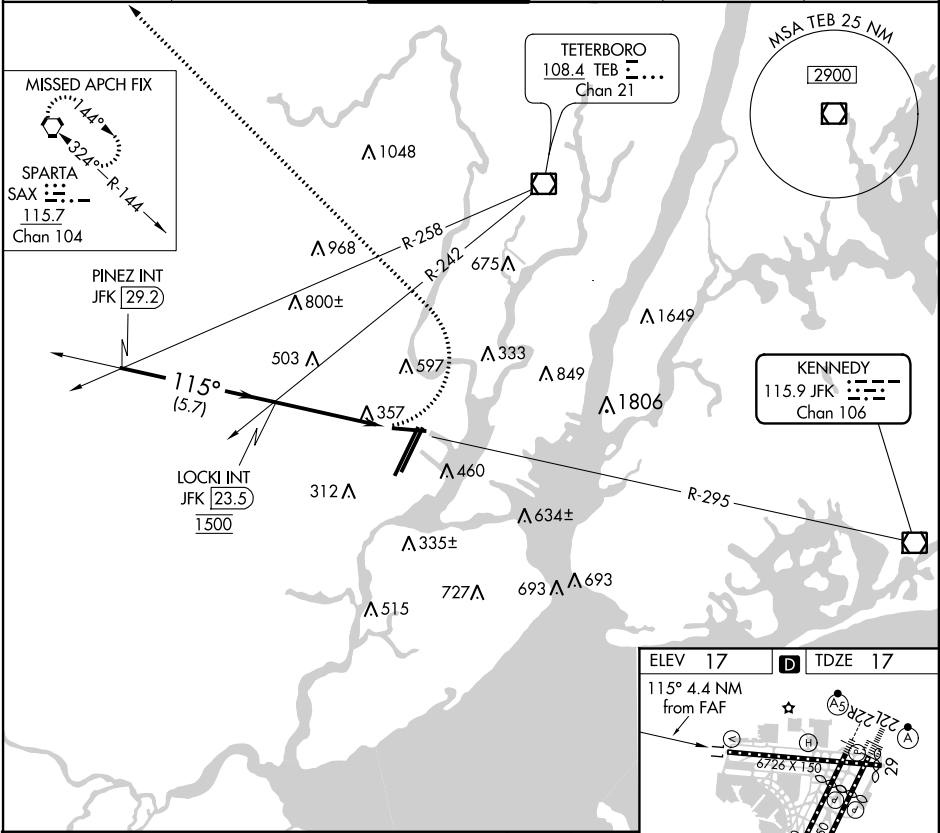


VOR/DME JFK	APP CRS	Rwy ldg
115.9	115°	6726
Chan 106		TDZE 17
		Apt Elev 17

VOR RWY 11
NEWARK LIBERTY INTL (EWR)

RADAR required for procedure entry.		MISSED APPROACH: Climbing left turn to 3000 direct SAX VORTAC and hold.			
Rwy 11 helicopter visibility reduction below 1 SM NA. Straight-in Rwy 11 NA at night.					
D-ATIS	NEW YORK APP CON	NEWARK TOWER	GND CON	CLNC DEL	CPDLC
115.7 134.825	128.55 379.9	118.3 257.6	121.8	118.85	



NE-2, 31 DEC 2020 to 28 JAN 2021

NE-2, 31 DEC 2020 to 28 JAN 2021