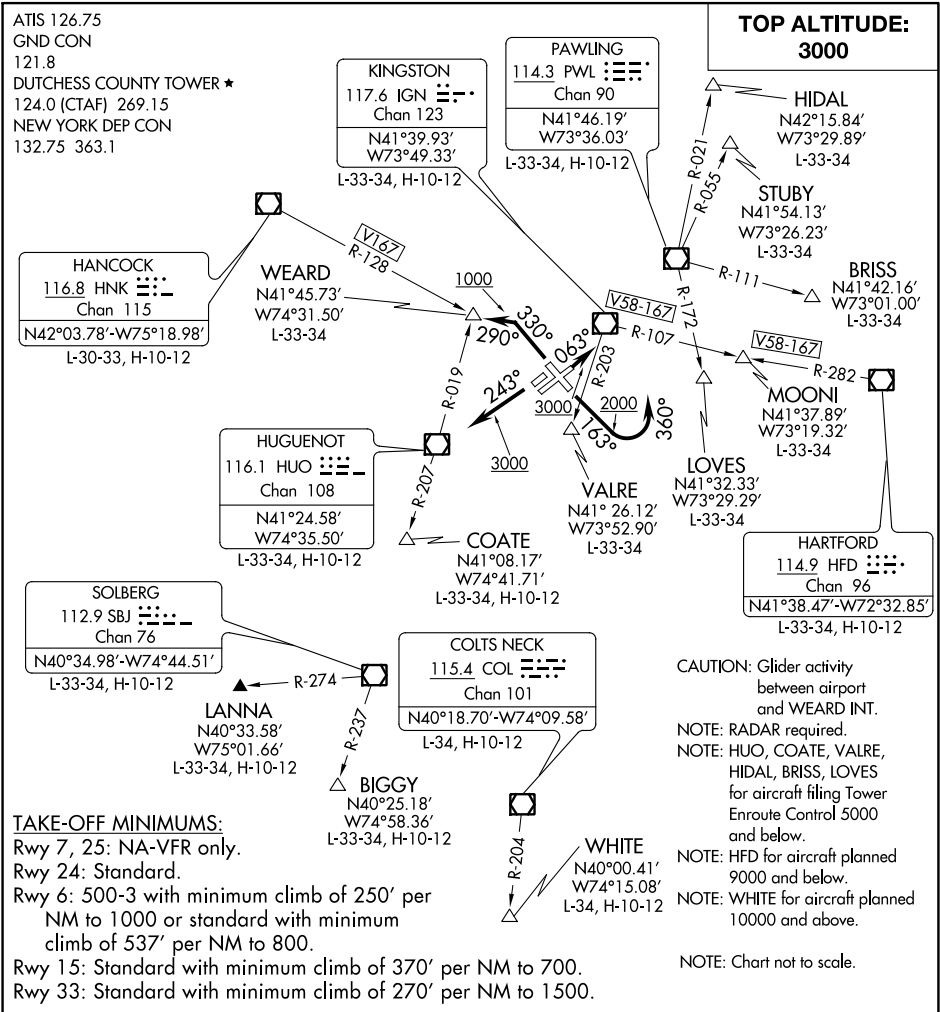


DUTCHESS EIGHT DEPARTURE

AL-286 (FAA)

HUDSON VALLEY RGNL (POU)

POUGHKEEPSIE, NEW YORK



NE-2, 31 DEC 2020 to 28 JAN 2021

NE-2, 31 DEC 2020 to 28 JAN 2021

DEPARTURE ROUTE DESCRIPTION

TAKEOFF RUNWAY 6: Climb heading 063° to 3000, thence. . .

TAKEOFF RUNWAY 15: Climb heading 163° to 2000, then turn left heading 360°, maintain 3000, thence. . .

TAKEOFF RUNWAY 24: Climb heading 243° to 3000, thence. . .

TAKEOFF RUNWAY 33: Climb heading 330° to 1000, then turn left heading 290°, maintain 3000, thence. . .

. . . via radar vectors to assigned Route/Fix, expect clearance to filed altitude/flight level within ten (10) minutes after departure.

LOST COMMUNICATIONS: If radio contact is not established/lost within 2 minutes after departure, proceed on course and climb to 5000. Ten minutes after departure, climb to filed altitude/flight level.

DUTCHESS EIGHT DEPARTURE

POUGHKEEPSIE, NEW YORK

HUDSON VALLEY RGNL (POU)