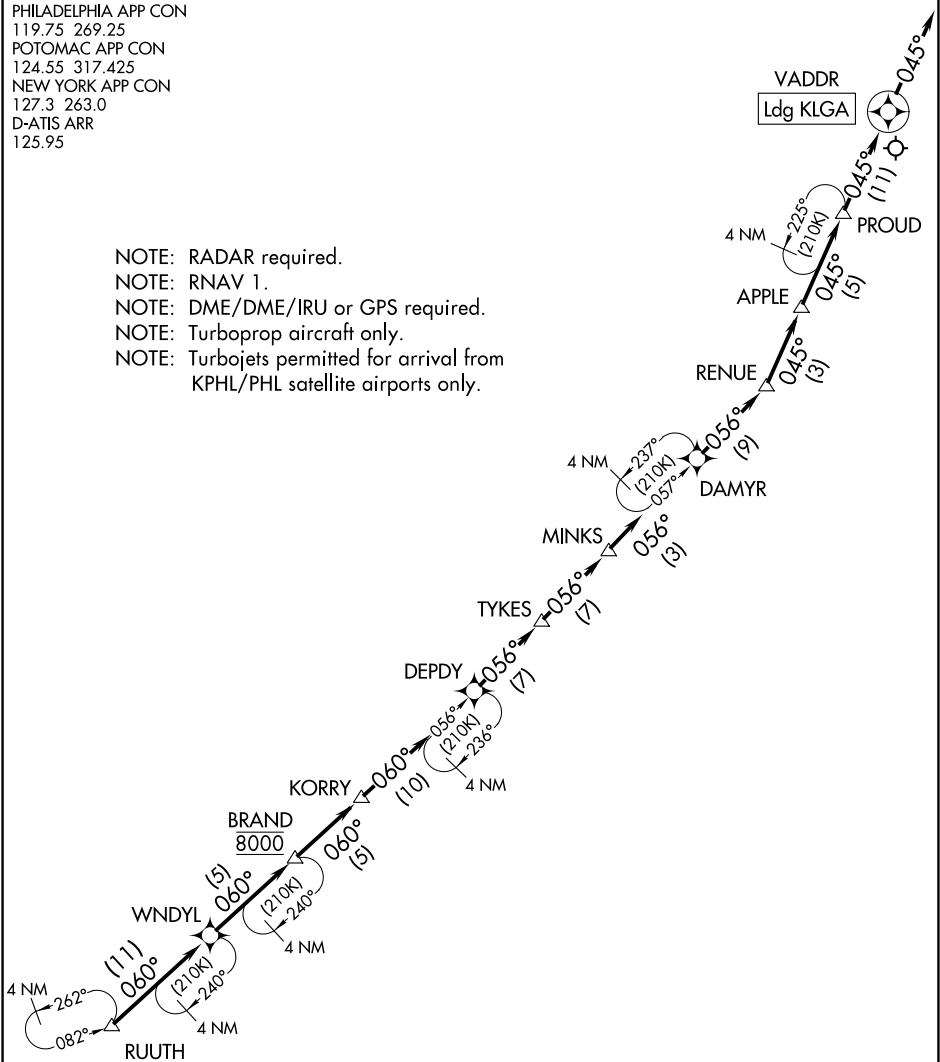


PHILADELPHIA APP CON
119.75 269.25
POTOMAC APP CON
124.55 317.425
NEW YORK APP CON
127.3 263.0
D-ATIS ARR
125.95

- NOTE: RADAR required.
NOTE: RNAV 1.
NOTE: DME/DME/IRU or GPS required.
NOTE: Turboprop aircraft only.
NOTE: Turbojets permitted for arrival from
KPHL/PHL satellite airports only.



NOTE: Chart not to scale.

ARRIVAL ROUTE DESCRIPTION

From RUUTH on track 060° to WNDYL, then on track 060° to cross BRAND at 8000, then on track 060° to KORRY, then on track 060° to DEPDI, then on track 056° to TYKES, then on track 056° to MINKS, then on track 056° to DAMYR, then on track 056° to RENUE, then on track 045° to APPLE, then on track 045° to PROUD, then on track 045° to VADDR, then on track 045°. Expect RADAR vectors to final approach course.