

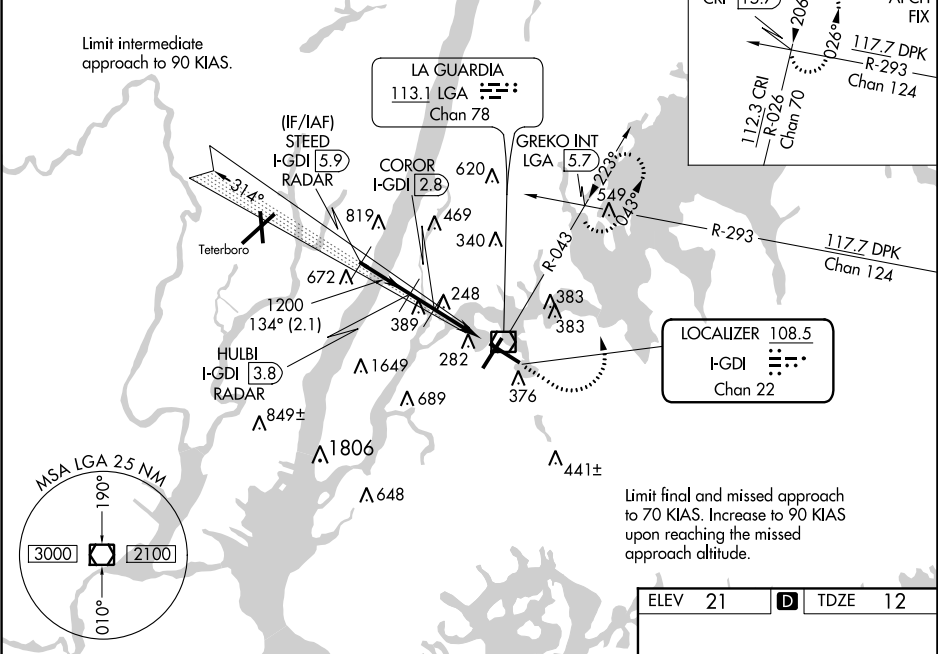
LOC/DME I-GDI	APP CRS	Rwy Idg	7003
108.5	134°	TDZE	12
Chan 22		Apt Elev	21

COPTER ILS or LOC RWY 13

LAGUARDIA (LGA)

DME or RADAR required.		MALSR	MISSED APPROACH: Climb to 800 then climbing left turn to 2000 via LGA VOR/DME R-043 to GREKO INT/ LGA 5.7 DME and hold.		
D-ATIS ARR 125.95	NEW YORK APP CON 120.8 263.0	LAGUARDIA TOWER 118.7 263.0	GND CON 121.7 263.0	CLNC DEL 121.875 (COPTER)	CPDLC
D-ATIS DEP 127.05					

RADAR REQUIRED



VGSI and ILS glidepath not coincident (VGSI Angle 3.10/TCH 55).		800	2000	GREKO INT
STEED I-GDI 5.9 RADAR	HULBI I-GDI 3.8 RADAR	LGA R-043		
2500	1200	COROR I-GDI 2.8	I-GDI* 1.7	I-GDI 0.4
GS 3.10° HCH 49	1200			
Intermediate descent gradient is 625 ft/NM.				
2.1 NM 1 NM 1.1 NM 1.3 NM				
CATEGORY	COPTER	B	C	D
H-ILS 13	212/12 200 (200-¼)		NA	
H-LOC 13	800/12 788 (800-¼)		NA	
COROR FIX MINIMUMS				
H-LOC 13	500/12 488 (500-¼)		NA	

ELEV 21	TDZE 12
134° 3.4 NM from FAF	
TWR 240	
TDZ/CL Rwy 4, 13 and 22	
HIRL Rwy 4-22 and 13-31	
REIL Rwy 31	
FAF to MAP 3.4 NM	
Knots	45 60 75 90 105
Min:Sec	4:32 3:24 2:43 2:16 1:57

LAGUARDIA (LGA)

COPTER ILS or LOC RWY 13

NE-2, 31 DEC 2020 to 28 JAN 2021

NE-2, 31 DEC 2020 to 28 JAN 2021