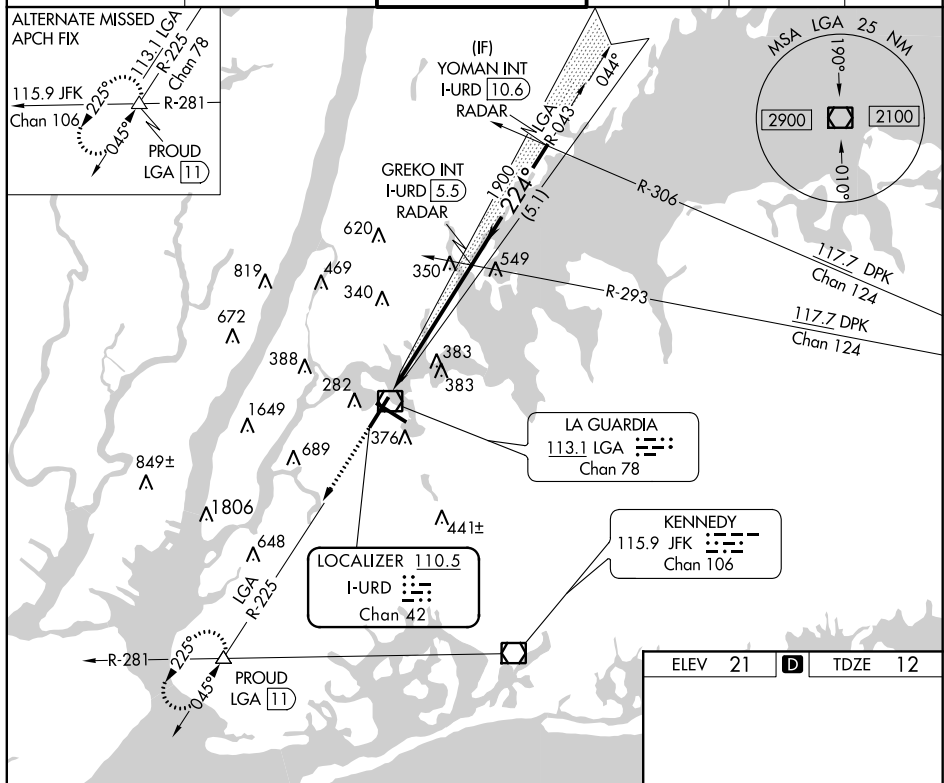


ILS RWY 22 (SA CAT I & II)
LAGUARDIA (LGA)

ALSF-1

MISSED APPROACH: Climb to 3000 on LGA VOR/DME R-225 to PROUD INT/LGA11 DME and hold, continue climb-in-hold to 3000.

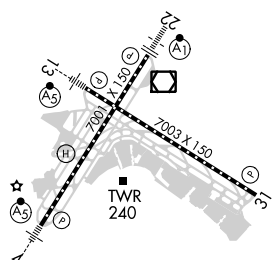


The diagram shows a flight path starting from a runway at 0° and climbing to clear a 1900m obstacle. The climb angle is 22°. Key parameters include:

- VGS1 and ILS glidepath not coincident**: VGSI Angle 3.00/TCH 67°.
- GREKO INT I-URD [5.5]**
- YOMAN INT I-URD [10.6] RADAR**
- I-URD DME ANTENNA**
- LGA R-225**
- PROUD** (triangle symbol)
- GS 3.00° TCH 52**
- Distances**: 1017' (runway), 5.7 NM (to obstacle), 5.1 NM (from obstacle to Yoman Int).

CATEGORY	A	B	C	D
S-ILS 22	SA CAT I RA 162/14	150	DA 162	
S-ILS 22	SA CAT II RA 112/12	100	DA 112	

SA CATEGORY I & II ILS - SPECIAL AIRCREW
& AIRCRAFT CERTIFICATION REQUIRED



TDZ/CL Rwy 4, 13 and 22
HIRL Rwy 4-22 and 13-31
REIL Rwy 31