

LOC/DME I-PZV
108.5
Chan **22**

APP CRS
316°

Rwy Idg
TDZE **7**
Apt Elev **21**

7003

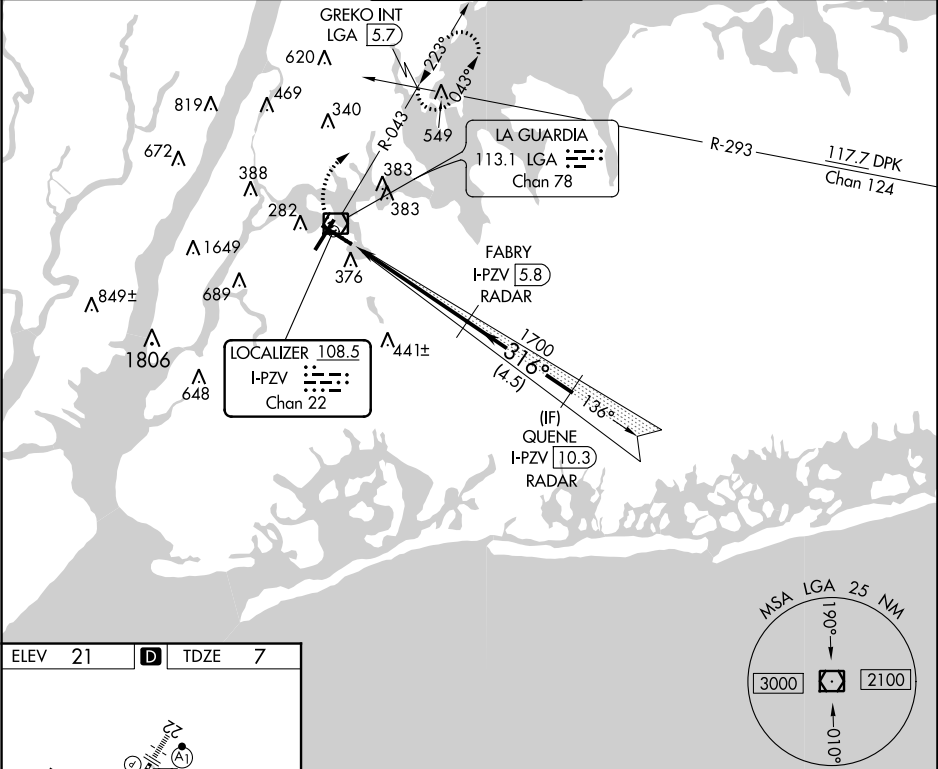
LOC RWY 31
LAGUARDIA (LGA)

RADAR required for procedure entry. DME required.

Rwy 31 helicopter visibility reduction below RVR 4000 NA.

MISSED APPROACH: Climbing right turn to 2000 on LGA VOR/DME R-043 to GREKO INT/LGA 5.7 DME and hold, continue climb-in-hold to 2000.

D-ATIS ARR 125.95 D-ATIS DEP 127.05	NEW YORK APP CON 120.8 263.0	LAGUARDIA TOWER 118.7 263.0	GND CON 121.7 263.0	CLNC DEL 135.2	CPDLC
--	--	---------------------------------------	-------------------------------	--------------------------	-------



ELEV 21

D

TDZE 7

TDZ/CL Rwy 4, 13 and 22
HIRL Rwy 4-22 and 13-31
REIL Rwy 31

2000

GREKO INT

VGSI and descent angles not coincident (VGSI Angle 3.00/TCH 71).

FABRY I-PZV 5.8 RADAR

QUENE I-PZV 10.3 RADAR

CATEGORY	A	B	C	D
S-31	600/55	593 (600-1)	600-1¾	593 (600-1¾)
C CIRCLING	700-1	679 (700-1)	1080-3 1059 (1100-3)	1260-3 1239 (1300-3)