

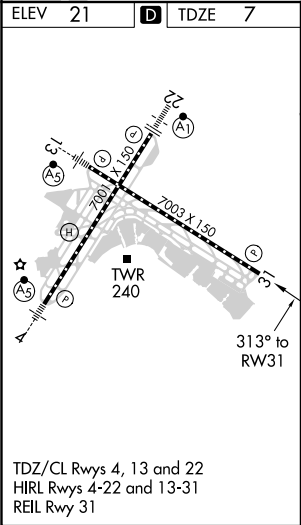
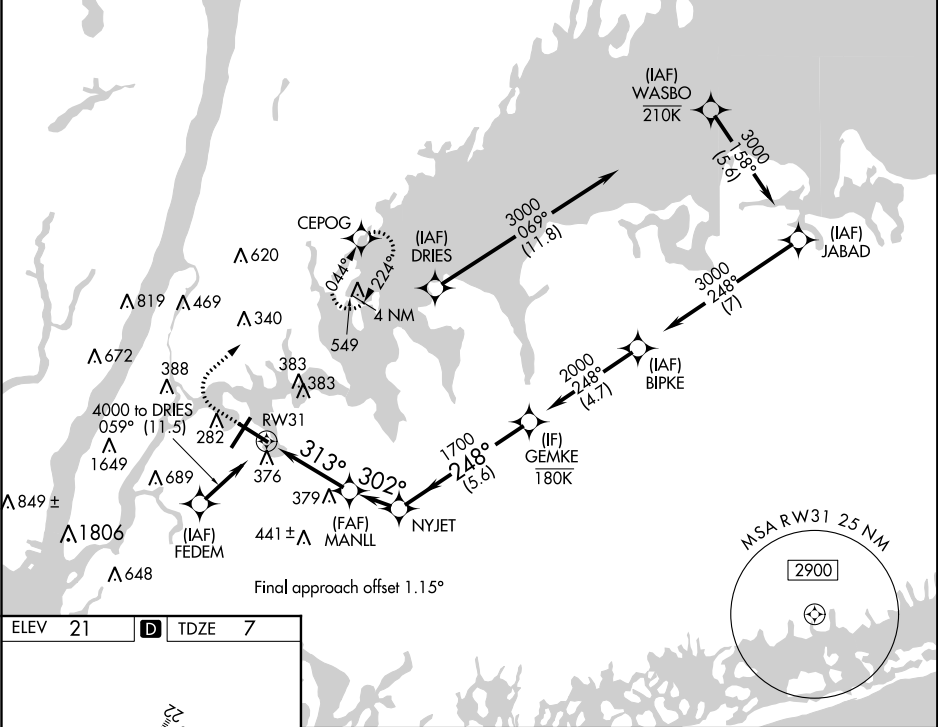
APP CRS	Rwy Idg	7003
313°	TDZE	7
	Apt Elev	21

RNAV (GPS) Y RWY 31

LAGUARDIA (LGA)

RNP APCH.	MISSED APPROACH: (Do not exceed 220K until CEPOG) Climb to 700 then climbing right turn to 2000 direct CEPOG and hold.
<div><div>▼</div><div>▲</div></div> Helicopter visibility reduction below 1 SM NA. Circling NA for Cat D northwest of Rwy 4 and southwest of Rwy 13. For uncompensated Baro-VNAV systems, LNAV/VNAV NA below -12°C or above 48°C.	

D-ATIS ARR	NEW YORK APP CON	LAGUARDIA TOWER	GND CON	CLNC DEL	CPDLC
D-ATIS DEP	125.95 127.05	120.8 263.0	118.7 263.0	121.7 263.0 135.2	



700	2000	CEPOG	VGSI and RNAV glidepath not coincident (VGSI Angle 3.00/TCH 71).	