

WAAS CH <b>60918</b> <b>W04A</b>	APP CRS <b>044°</b>	Rwy Idg <b>7001</b> TDZE <b>21</b> Apt Elev <b>21</b>
--	------------------------	---

RNAV (GPS) Y RWY 4  
LAGUARDIA (LGA)

RNP APCH.

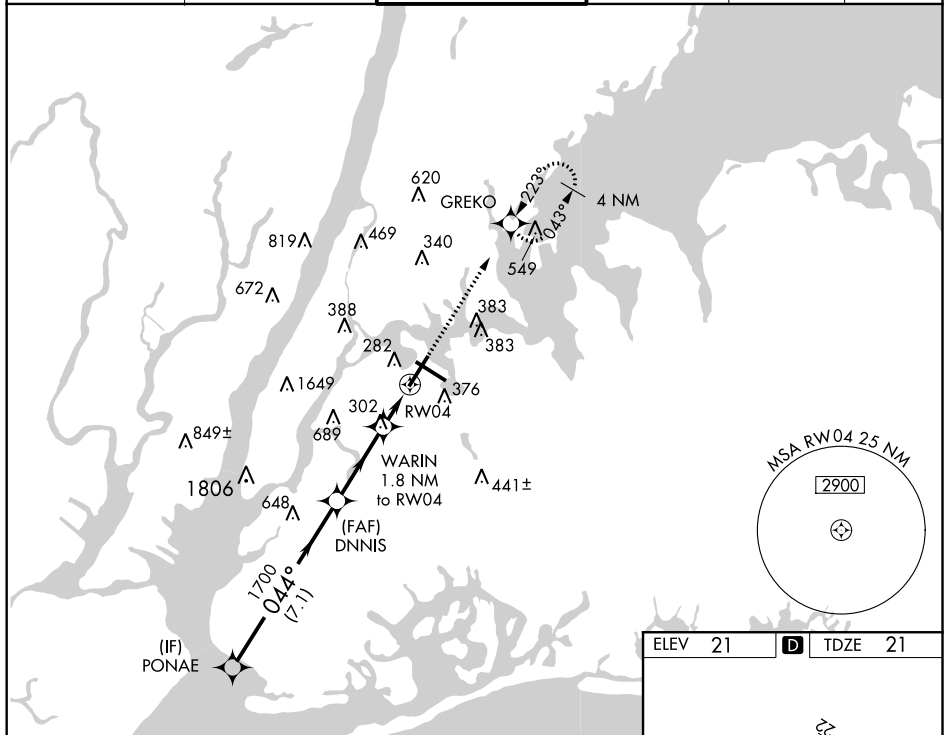
**T** Inop table does not apply to LPV all Cats and LNAV Cats A and B. For uncompensated Baro-VNAV systems, LNAV/VNAV NA below -11°C (13°F) or above 47°C (118°F).  
**A** Rwy 4 helicopter visibility reduction below RVR 5000 NA.

MALSR



**MISSED APPROACH:**  
Climb to 2000 direct  
GREKO and hold,  
continue climb-in-hold  
to 2000.

D-ATIS ARR	<b>125.95</b>	NEW YORK APP CON		LAGUARDIA TOWER		GND CON		CLNC DEL		CPDLC
D-ATIS DEP	<b>127.05</b>	<b>120.8 263.0</b>		<b>118.7 263.0</b>		<b>121.7 263.0</b>		<b>135.2</b>		



ELEV 21	<b>D</b>	TDZE 21
---------	----------	---------

