

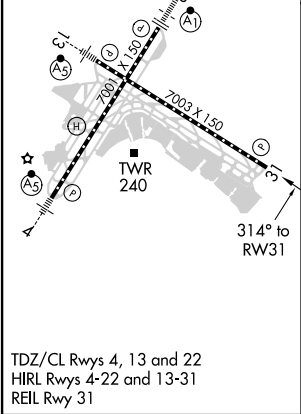
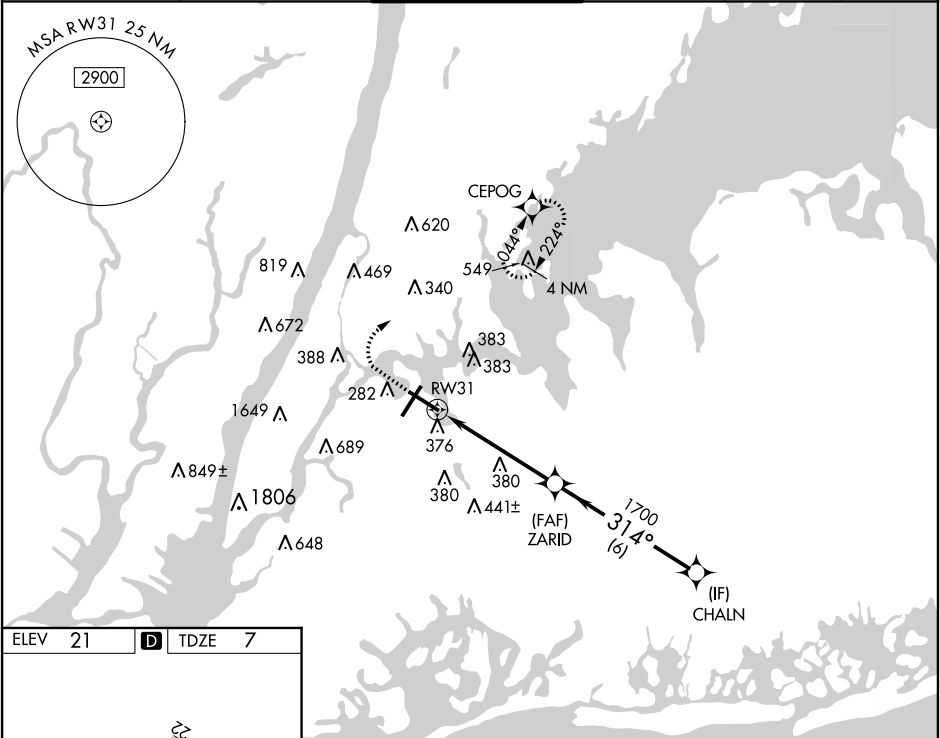
WAAS CH 48928 W31A	APP CRS 314°	Rwy Idg TDZE Apt Elev	7003 7 21
--	------------------------	-----------------------------	--------------------------------------

RNAV (GPS) Z RWY 31

LAGUARDIA (LGA)

RNP APCH.	MISSED APPROACH: (Do not exceed 220K until CEPOG) Climb to 700 then climbing right turn to 2000 direct CEPOG and hold.
▼ Helicopter visibility reduction below 1 SM NA. For uncompensated Baro-VNAV systems, LNAV/VNAV NA below -12°C or above 48°C. Circling NA for Cat D northwest of Rwy 4 and southwest of Rwy 13.	

D-ATIS ARR 125.95	NEW YORK APP CON 120.8 263.0	LAGUARDIA TOWER 118.7 263.0	GND CON 121.7 263.0	CLNC DEL 135.2	CPDLC
D-ATIS DEP 127.05					



ELEV 21	D	TDZE 7
700	2000	CEPOG
VGSi and RNAV glidepath not coincident (VGSi Angle 3.00/TCH 71).		
ZARID 1700		
RW31 314°		
CHALN 2000		
GP 3.10° TCH 50		
5 NM 6 NM		
CATEGORY	A	B C D
LPV DA	330/50	323 (400-1)
LNAV/VNAV DA	618-1¼	611 (600-1¼)
LNAV MDA	640/55	633 (700-1) 640-1¼ 633 (700-1¼)
CIRCLING	700-1	679 (700-1) 1080-3 1059 (1100-3) 1260-3 1239 (1300-3)