

LOC I-MWD 110.7	APP CRS 224°	Rwy Idg TDZE Apt Elev	8001 559 559
---------------------------	------------------------	-----------------------------	---

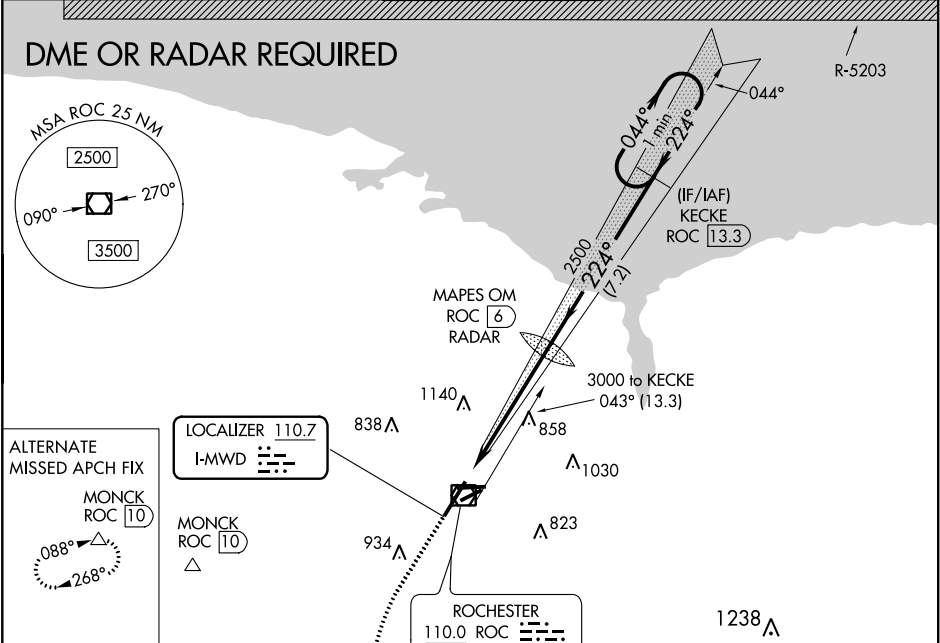
ILS or LOC RWY 22
FREDERICK DOUGLASS-GREATER ROCHESTER INTL (ROC)

⚠ When R-5203 active hold in lieu not authorized.
⚠ * RVR 1800 authorized with the use of FD or AP or HUD to DA.

MALSR

MISSED APPROACH: Climb to 1000 then climbing left turn to 4000 direct GEE VOR/DME and hold.

ATIS 124.825	ROCHESTER APP CON 119.55 269.6	ROCHESTER TOWER 118.3 254.3	GND CON 121.7	CLNC DEL 118.8 343.65
------------------------	--	---------------------------------------	-------------------------	---------------------------------



ELEV **559** **D** TDZE **559**

224° 5.6 NM from FAF

641' **Λ**

655' **Λ**

643' **Λ**

611' **Λ**

628' **Λ**

647' **Λ**

617' **Λ**

696' **Λ**

TDZ/CL Rwy 4

REIL Rwys 7, 10 and 25

MIRL Rwy 7-25

HIRL Rwys 10-28 and 4-22

FAF to MAP 5.6 NM

Knots	60	90	120	150	180
Min:Sec	5:36	3:44	2:48	2:14	1:52

1000' **↑**

4000' **↶**

GEE

MAPES OM ROC 6 RADAR

KECKE ROC 13.3

One Minute Holding Pattern

224° 044° 2500

2500

GS 3.00° TCH 50

5.6 NM 7.2 NM

CATEGORY	A	B	C	D
S-ILS 22	* 759/24 200 (200-½)			
S-LOC 22	1000/24 441 (500-½)		1000/45 441 (500-¾)	
CIRCLING	1060-1 501 (600-1)		1500-2¾ 941 (1000-¾) 1500-3 941 (1000-3)	

NE-2, 31 DEC 2020 to 28 JAN 2021

NE-2, 31 DEC 2020 to 28 JAN 2021