


ILS or LOC RWY 28
FREDERICK DOUGLASS-GREATER ROCHESTER INTL (ROC)

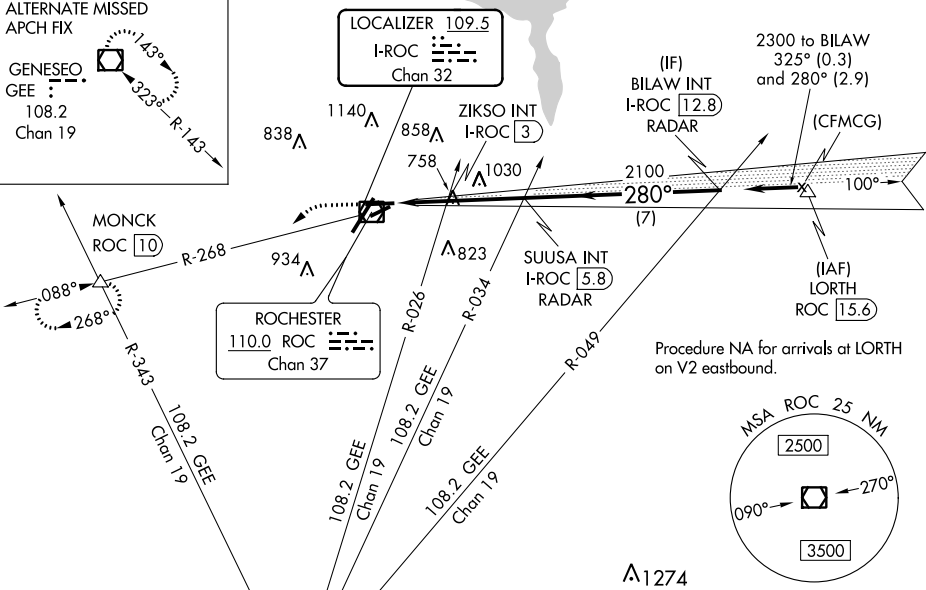
MALSR


MISSED APPROACH: Climb to 2000 then climbing left turn to 3000 on heading 230° and ROC VOR/DME R-268 to MONCK INT/ROC 10 DME and hold.

ALTERNATE MISSED
APCH FIX

GENESEO
GEE
108.2
Chan 19

143°
323°—R-143



2000 ↑	3000 hdg 230°	ROC R-268	MONCK △	SUUSA INT I-ROC [5.8]	BILAW INT I-ROC [12.8]
* LOC only	ZIKSO INT I-ROC [3]	* I-ROC [2.4]	2100	280°	2300
I-ROC [1]	1200	2100	7 NM	GS 3.00° TCH 58	
CATEGORY	A	B	C	D	
S-ILS 28	821/40		271 (300-¾)		
S-LOC 28	1200/40	650 (700-¾)	1200-1⅜	650 (700-1⅜)	
CIRCLING	1200-1	641 (700-1)	1500-2¾ 941 (1000-2¾)	1500-3 941 (1000-3)	
ZIKSO FIX MINIMUMS (DUAL VOR RECEIVERS OR DME REQUIRED)					
S-LOC 28	1020/40	470 (500-¾)	1020/50	470 (500-1)	
CIRCLING	1060-1	501 (600-1)	1500-2¾ 941 (1000-2¾)	1500-3 941 (1000-3)	