

WAAS CH 58122 W22A	APP CRS 220°	Rwy Idg TDZE Apt Elev	7001 378 378
--	------------------------	-----------------------------	---

RNAV (GPS) RWY 22

SCHENECTADY COUNTY (SCH)

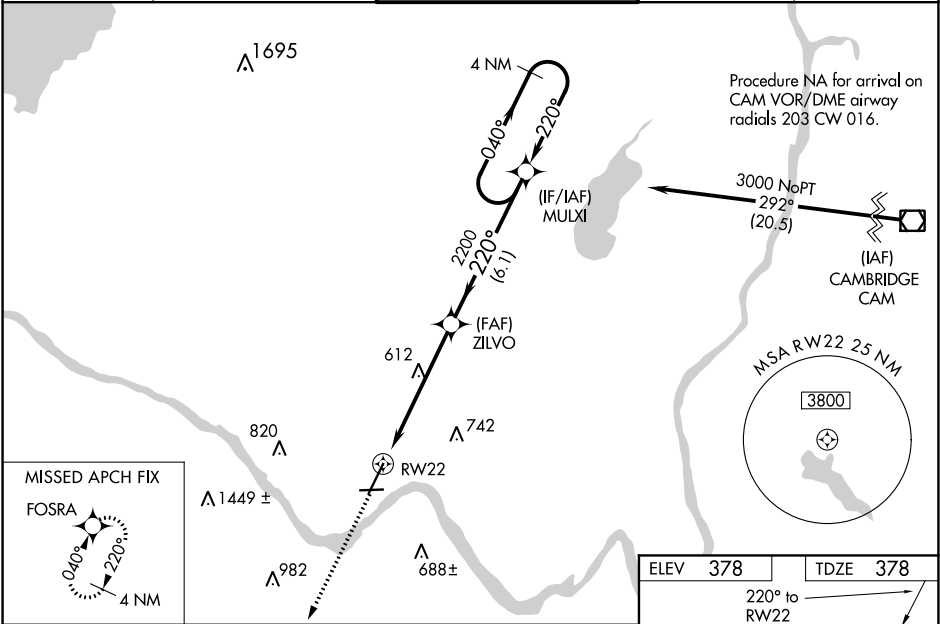
▼

▲ NA

Night Landing: Rwy 10, 15, 33 NA. Baro-VNAV NA when using Albany altimeter setting. For uncompensated Baro-VNAV systems, LNAV/VNAV NA below -15°C (5°F) or above 54°C (130°F). DME/DME RNP-0.3 NA. Helicopter visibility reduction below ¾ SM NA. VDP NA with Albany altimeter setting. When local altimeter setting not received, use Albany altimeter setting and increase LPV DA to 661, LNAV/VNAV DA to 749, and all MDA 40 feet, increase LPV and LNAV/VNAV all Cats, LNAV Cat C and D and Circling Cat C visibility ½ mile.

MISSED APPROACH:
Climb to 3700 direct FOSRA and hold.

AWOS-3 119.275	ALBANY APP CON 118.05 263.075	SCHENECTADY TOWER ★ 121.3 (CTAF) 321.1	GND CON 121.9	UNICOM 122.95
--------------------------	---	--	-------------------------	-------------------------



3700

↑

FOSRA

* LNAV only.

RW22

* 1.5 NM to RW22

1.5 NM

4.1 NM

6.1 NM

ZILVO

2200

2200

MULXI

220°

220°

4 NM Holding Pattern

040° →

← 220°

3000

GP 3.00°

TCH 50

CATEGORY	A	B	C	D
LPV DA	628-¾		250 (300-¾)	
LNAV/VNAV DA	716-1⅛		338 (400-1⅛)	
LNAV MDA	900-1 522 (600-1)		900-1½ 522 (600-1½)	
CIRCLING	900-1 522 (600-1)		900-1½ 522 (600-1½) 980-2 602 (700-2)	

