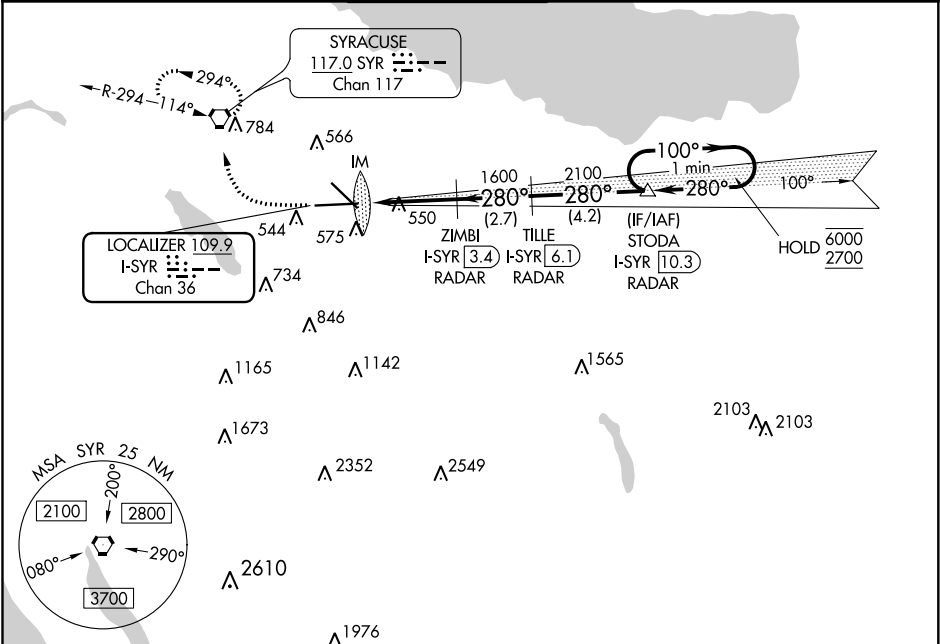


LOC/DME I-SYR 109.9 Chan 36	APP CRS 280°	Rwy Idg TDZE 413 Apt Elev 421	9003 413 421
---	------------------------	---	---

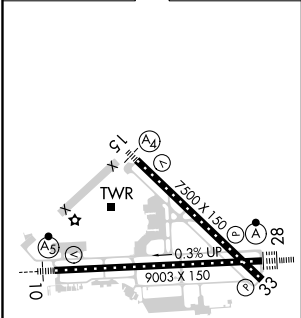
ILS RWY 28 (CAT II)
SYRACUSE HANCOCK INTL (SYR)

DME or RADAR required.	ALSF-2	MISSED APPROACH: Climb to 1100 then climbing right turn to 3000 direct SYR VORTAC and hold, continue climb-in-hold to 3000.
▼ RVR 1000 authorized with specific OPSEC, MSPEC, or LOA approval and use of autoland or HUD to touchdown.		

ATIS 124.225	SYRACUSE APP CON 126.125 269.125	SYRACUSE TOWER 120.3 239.0	GND CON 121.7 348.6	CLNC DEL 125.05 257.775
------------------------	--	--------------------------------------	-------------------------------	-----------------------------------



ELEV 421	D	TDZE 413
-----------------	----------	-----------------



1100	3000	SYR				
			ZIMBI I-SYR 3.4 RADAR	TILLE I-SYR 6.1 RADAR	STODA I-SYR 10.3 RADAR	One Minute Holding Pattern
I-SYR DME ANTENNA			1600	280°	100° → 6000 ← 280° 2700	
I-SYR 0.2			1600	2100		GS 3.00° TCH 60
512			3.6 NM	2.7 NM	4.2 NM	
975°			A	B	C	D
CATEGORY						
S-ILS 28			RA 100/12 100 DA 513			