

WAAS CH <b>40017</b> <b>W10A</b>	APP CRS <b>100°</b>	Rwy Idg <b>9003</b> TDZE <b>421</b> Apt Elev <b>421</b>
--	------------------------	---

RNAV (GPS) Z RWY 10

SYRACUSE HANCOCK INTL (SYR)

RNP APCH.

▼

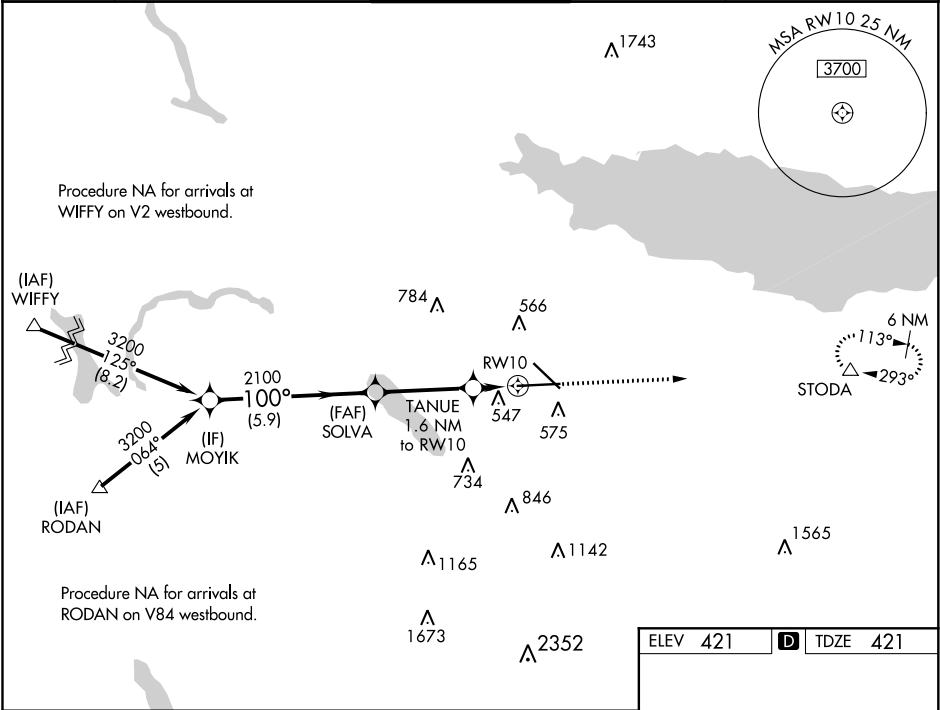
▲

For uncompensated Baro-VNAV systems, LNAV/ VNAV NA below -19°C or above 54°C. For inop ALS, increase LNAV Cats C/D visibility to RVR 5500. # RVR 1800 authorized with use of FD or AP or HUD to DA.

MALSR

MISSED APPROACH: Climb to 3200 direct STODA and hold, continue climb-in-hold to 3200.

ATIS <b>124.225</b>	SYRACUSE APP CON <b>126.125 269.125</b>	SYRACUSE TOWER <b>120.3 239.0</b>	GND CON <b>121.7 348.6</b>	CLNC DEL <b>125.05 257.775</b>
------------------------	--	--------------------------------------	-------------------------------	-----------------------------------



MOYIK				SOLVA		3200		STODA	
3200				2100		100°		1.6 NM to RW10	
GP 3.00° TCH 55				2100		*980		*LNAV only	
5.9 NM				3.5 NM		0.6 NM		1 NM	
CATEGORY		A		B		C		D	
LPV DA#		621/24 200 (200-½)							
LNAV/VNAV DA		846/40 425 (500-¾)							
LNAV MDA		800/24 379 (400-½)				800/35 379 (400-¾)			
CIRCLING		900-1 479 (500-1)		920-1 499 (500-1)		1020-1½ 599 (600-1½)		1180-2½ 759 (800-2½)	

ELEV 421 TDZE 421