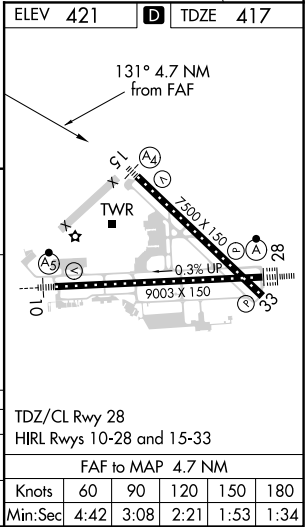
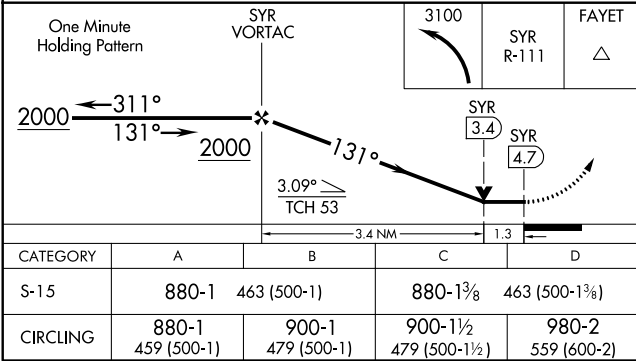
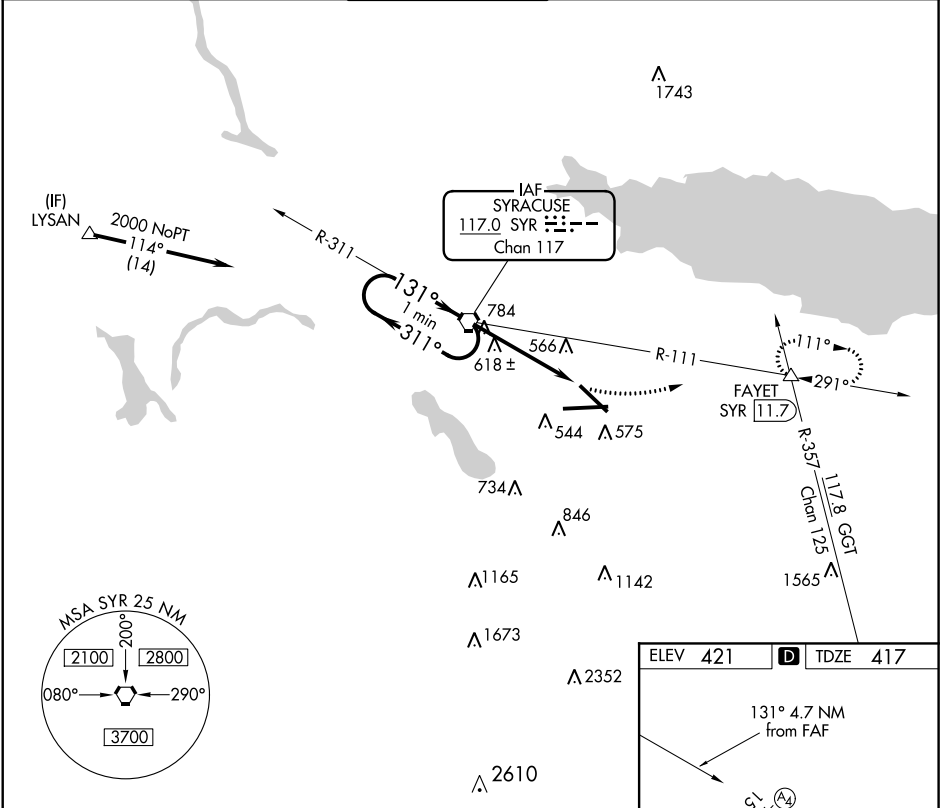


VORTAC SYR	APP CRS	Rwy Idg	7500
117.0	131°	TDZE	417
Chan 117		Apt Elev	421

VOR RWY 15
SYRACUSE HANCOCK INTL (SYR)

<div><div>▼</div><div>Inoperative table does not apply. Helicopter visibility reduction below 3/4 SM NA.</div></div>	<div><div>MALS</div><div><div>A4</div><div><div></div><div></div><div></div></div></div></div>	MISSED APPROACH: Climbing left turn to 3100 via SYR R-111 to FAYET INT/SYR 11.7 DME and hold, continue climb-in-hold to 3100.
--	--	---

ATIS 124.225	SYRACUSE APP CON 126.125 269.125	SYRACUSE TOWER 120.3 239.0	GND CON 121.7 348.6	CLNC DEL 125.05 257.775
-----------------	-------------------------------------	-------------------------------	------------------------	----------------------------



NE-2, 31 DEC 2020 to 28 JAN 2021

NE-2, 31 DEC 2020 to 28 JAN 2021