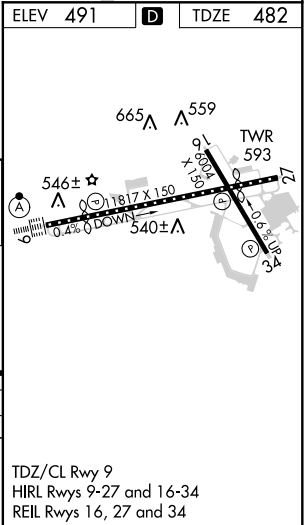
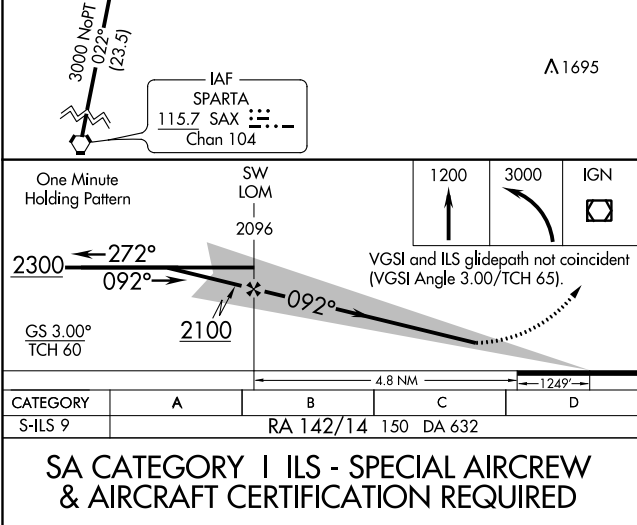
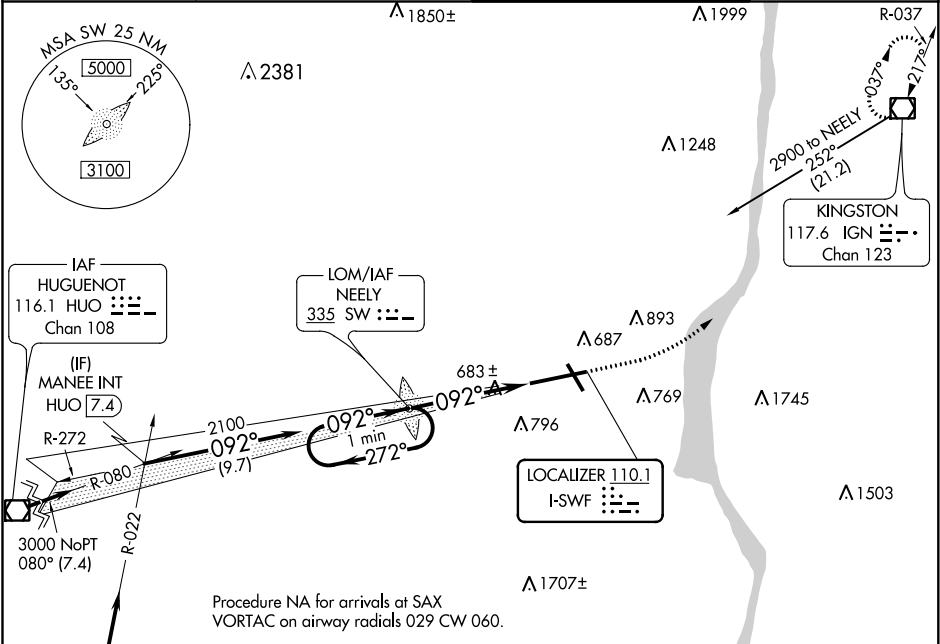


LOC I-SWF <b>110.1</b>	APP CRS <b>092°</b>	Rwy Idg TDZE Apt Elev <b>8817</b> <b>482</b> <b>491</b>
---------------------------	------------------------	--

**ILS RWY 9 (SA CAT I)**  
**NEW YORK STEWART INTL (SWF)**

 Requires specific OPSPEC, MSPEC, or LOA approval and use of HUD to DH.	ALSF-2 	MISSED APPROACH: Climb to 1200 then dimbing left turn to 3000 direct IGN VOR/DME and hold.
--	------------	--

ATIS <b>124.575</b>	NEW YORK APP CON <b>132.75 363.1</b>	STEWART TOWER <b>121.0 254.4</b>	GND CON <b>121.9</b>
------------------------	---	-------------------------------------	-------------------------



NE-2, 31 DEC 2020 to 28 JAN 2021

NE-2, 31 DEC 2020 to 28 JAN 2021