

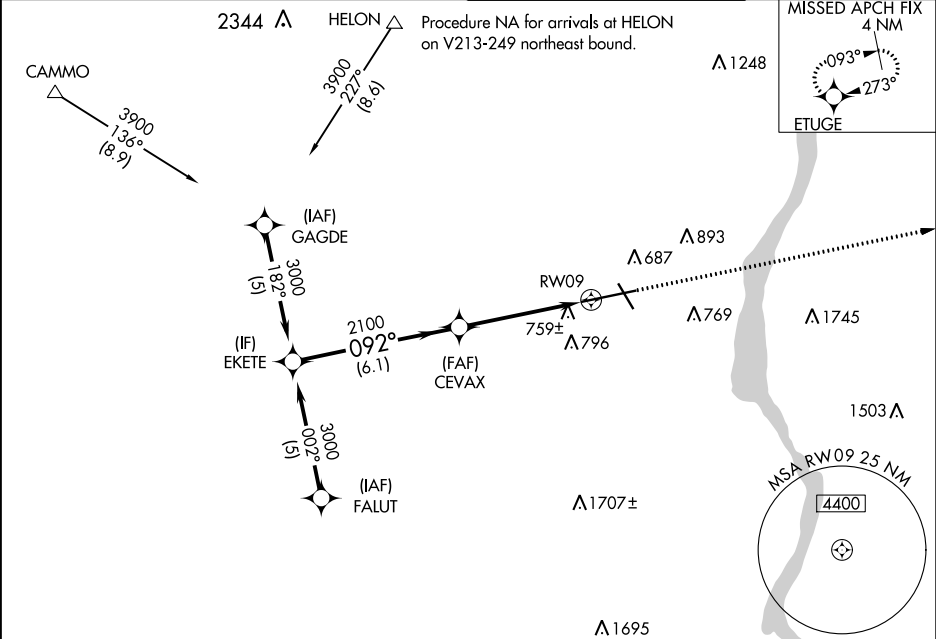
WAAS CH 62818 W09A	APP CRS 092°	Rwy Idg 8817 TDZE 482 Apt Elev 491
--	------------------------	---

RNAV (GPS) RWY 9

NEW YORK STEWART INTL (SWF')

RNP APCH.	ALSF-2	MISSED APPROACH: Climb to 3100 direct ETUGE and hold.
<div><div></div><div>Inop table does not apply to LNAV/VNAV. For uncompensated Baro-VNAV systems, LNAV/VNAV NA below -15°C or above 54°C.</div></div>	<div><div></div></div>	

ATIS 124.575	NEW YORK APP CON 132.75 363.1	STEWART TOWER 121.0 254.4	GND CON 121.9
------------------------	---	-------------------------------------	-------------------------



	ELEV 491	D	TDZE 482
<div><div>VGSI and RNAV glidepath not coincident (VGSI Angle 3.00/TCH 65).</div><div><div>ETUGE</div><div>3100</div></div><div><div>3000</div><div>092°</div><div>2100</div><div>CEVAX</div><div>2100</div><div>GP 3.00° TCH 60</div><div>6.1 NM</div><div>3.3 NM</div><div>1.5</div><div>RW09</div><div>*1.5 NM to RW09</div><div>*LNAV only</div></div></div>			
CATEGORY	A	B	C
LPV DA		682/24	200 (200-½)
LNAV/ VNAV		1098-2	616 (700-2)
LNAV MDA	1020/24	538 (600-½)	1020/55 538 (600-1)
<div><div></div></div> CIRCLING	1200-1	709 (800-1)	1200-2 709 (800-2)
			1020/60 538 (600-¼)
			1200-2½ 709 (800-2¼)
<div><div>TDZ/CL Rwy 9</div><div>HIRL Rwy 9-27 and 16-34</div><div>REIL Rwy 16, 27 and 34</div></div>			