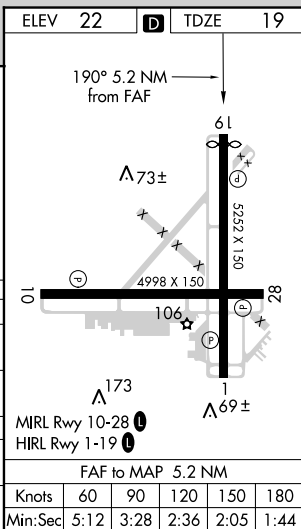
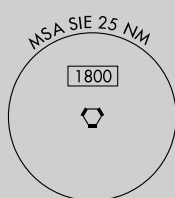


LOC RWY 19
CAPE MAY COUNTY (WWD)

MISSED APPROACH: Climb to 1000 then climbing left turn to 2500 direct SIE VORTAC and hold.

UNICOM
122.7 (CTAF) **L**

CATEGORY	A	B	C	D
S-19	460-1 441 (500-1)	460-1 $\frac{3}{8}$ 441 (500-1 $\frac{3}{8}$)		
C CIRCLING	480-1 458 (500-1)	620-1 598 (600-1)	620-1 $\frac{1}{2}$ 598 (600-1 $\frac{1}{2}$)	980-3 958 (1000-3)
HOXQU FIX MINIMUMS (DUAL VOR RECEIVERS REQUIRED)				
S-19	360-1 341 (400-1)			
C CIRCLING	480-1 458 (500-1)	620-1 598 (600-1)	620-1 $\frac{1}{2}$ 598 (600-1 $\frac{1}{2}$)	980-3 958 (1000-3)

NE-2, 31 DEC 2020 to 28 JAN 2021