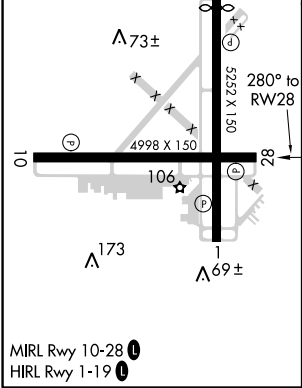
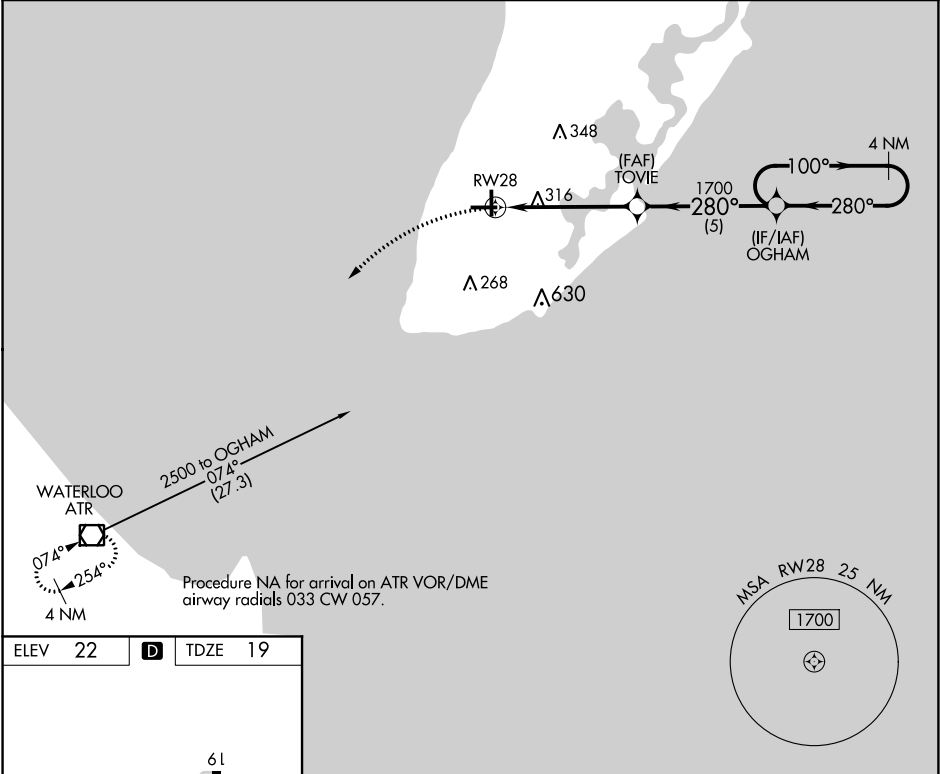


WAAS CH 86741 W28A	APP CRS 280°	Rwy Idg 4998 TDZE 19 Apt Elev 22
--	------------------------	---

RNAV (GPS) RWY 28
CAPE MAY COUNTY (WWD)

RNP APCH. ▼ For uncompensated Baro-VNAV systems, LNAV/VNAV NA below -15° C or above 54° C. Circling NA for Cats C and D northeast of Rwy 19 and 28. Rwy 28 helicopter visibility reduction below ¼ SM NA. Circling Rwy 1 NA at night. ▲	MISSED APPROACH: Climbing left turn to 2500 direct ATR VOR/DME and hold.
---	--

AWOS-3PT 118.275	ATLANTIC CITY APP CON 124.6 327.125	CLNC DEL 121.7	UNICOM 122.7 (CTAF) 0
----------------------------	---	--------------------------	---------------------------------



2500	ATR	VGSI and RNAV glidepath not coincident (VGSI Angle 3.00/TCH 45).		4 NM Holding Pattern
*LNAV only	*1.6 NM to RW28	TOVIE 1700	OGHAM	2500
RW28		280°	100°	GP 3.00° TCH 57
1.6		3.5 NM	5 NM	
CATEGORY	A	B	C	D
LPV DA	665-2½		646 (700-2½)	
LNAV/ VNAV DA	634-2½		615 (700-2½)	
LNAV MDA	580-1	561 (600-1)	580-1½	561 (600-1½)
CIRCLING	580-1 558 (600-1)	620-1 598 (600-1)	620-1½ 598 (600-1½)	980-3 958 (1000-3)