

APP CRS
151°

Rwy Idg
3500


TDZE
655

Apt Elev
660

RNAV (GPS) RWY 14

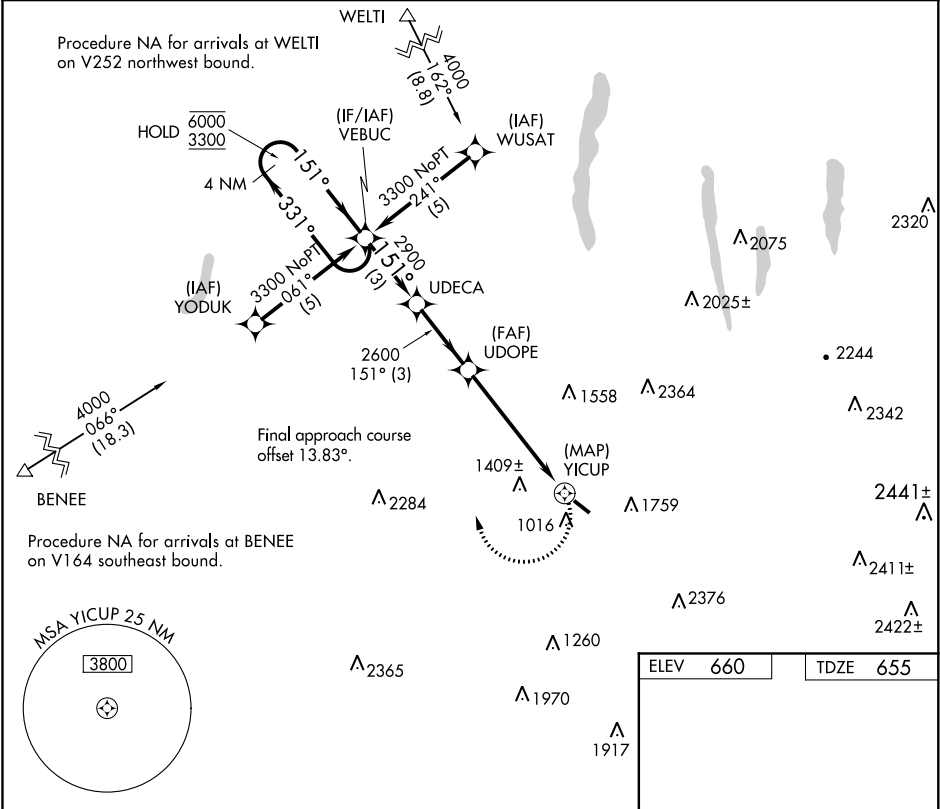
DANSVILLE MUNI (DSV)

RNP APCH.

 Procedure NA at night. Rwy 14 helicopter visibility reduction below 1 SM NA.

MISSED APPROACH: Climbing right turn to 3500 direct VEBUC and hold.

ASOS 118.325	ROCHESTER APP CON 123.7 322.3	UNICOM 123.0 (CTAF) 0
------------------------	---	---------------------------------



4 NM Holding Pattern VEBUC

VGSI and descent angles not coincident (VGSI Angle 3.00/TCH 35).

3500 VEBUC

UDECA

UDOPE

YICUP

2900

2600

2.98°

TCH 40

3 NM

3 NM

5.6 NM

0.5

CATEGORY	A	B	C	D
LNAB MDA	1840-1¼ 1185 (1200-1¼)	1840-1½ 1185 (1200-1½)	1840-3 1185 (1200-3)	NA
CIRCLING	1940-1¼ 1280 (1300-1¼)	2120-1½ 1460 (1500-1½)	2120-3 1460 (1500-3)	NA

ELEV 660

TDZE 655

MIRL Rwy 14-32 0

