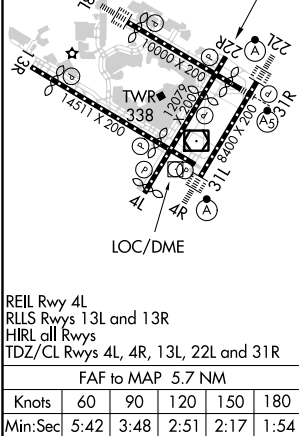
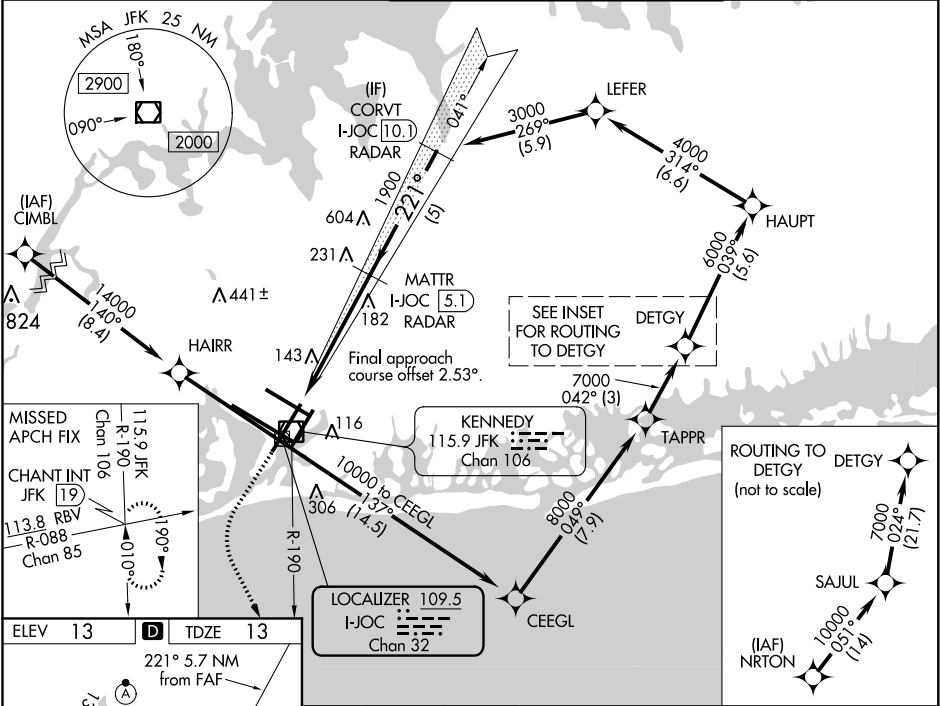


LOC/DME I-JOC	APP CRS	Rwy Idg	7795
109.5	221°	TDZE	13
Chan 32		Apt Elev	13

ILS or LOC RWY 22R  
JOHN F KENNEDY INTL (JFK)

RNAV 1-GPS or RADAR required for procedure entry. From CIMBL, NRTON: RNAV 1-GPS required. DME or RADAR required.		MISSED APPROACH: Climb to 2000 then climbing left turn to 4000 on JFK VOR/DME R-190 to CHANT INT and hold.
<div><div><div><div><div><div></div></div></div><div><div><div></div></div></div></div><div><div><div></div></div></div><div><div><div></div></div></div></div></div> <div>Simultaneous approach authorized.</div>		

D-ATIS (ARR/DEP) (ARR-NE) (ARR-SW)	NEW YORK APP CON	KENNEDY TOWER	GND CON	CLNC DEL	CPDLC
128.725 117.7 115.4	128.125 269.0	Rwys 4R/22L and 13L/31R 119.1 281.55 Rwys 4L/22R and 13R/31L 123.9 281.55	121.9 348.6	135.05 348.6	



2000 4000 JFK R-190		CHANT INT	MATTR I-JOC 5.1 RADAR	CORVT I-JOC 10.1 RADAR
VGSi and ILS glidepath not coincident (VGSi Angle 3.00/TCH 77).				
1900 221° 3000				
GS 3.00° TCH 59'				
5.7 NM 5 NM				
CATEGORY	A	B	C	D
S-ILS 22R	263/40 250 (300-3/4)			
S-LOC 22R	460/55	447 (500-1)	460-1 3/8	447 (500-1 3/8)
CIRCLING	640-1	627 (700-1)	680-1 3/4 667 (700-1 3/4)	680-2 667 (700-2)

NE-2, 31 DEC 2020 to 28 JAN 2021

NE-2, 31 DEC 2020 to 28 JAN 2021