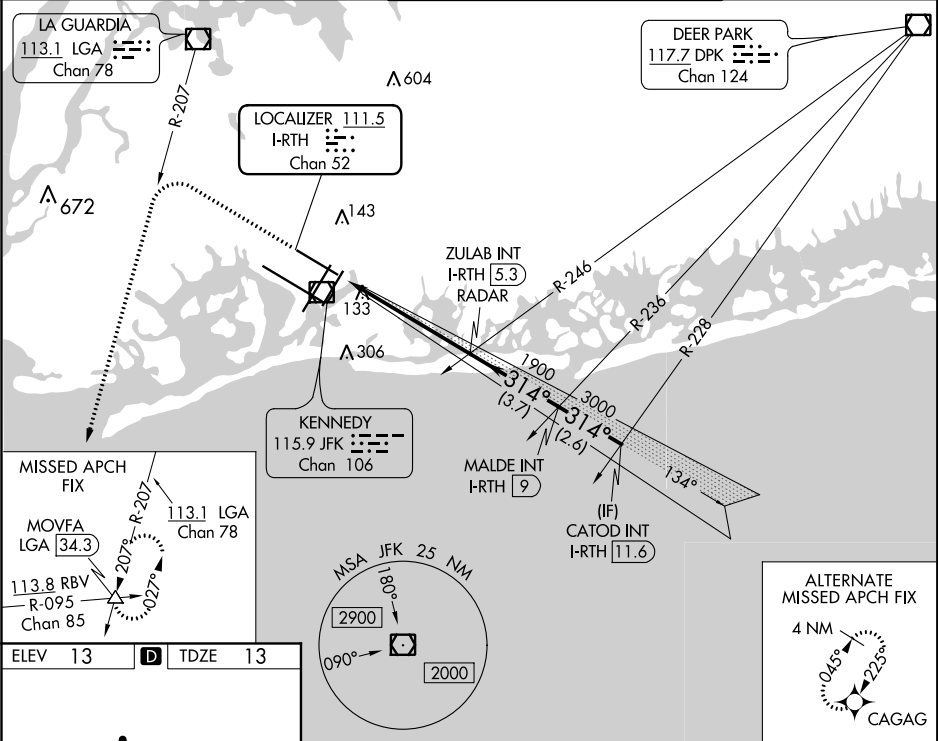


LOC/DME I-RTTH	APP CRS	Rwy Idg	8486
111.5	314°	TDZE	13
Chan 52		Apt Elev	13

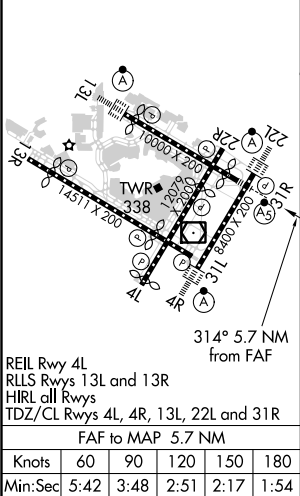
ILS or LOC RWY 31R
JOHN F KENNEDY INTL (JFK)

RADAR required for procedure entry.	MALSR	MISSED APPROACH: Climb to 1800 then climbing left turn to 4000 on LGA VOR/DME R-207 to MOVFA INT/LGA 34.3 DME and hold.
Simultaneous approach authorized.		

D-ATIS (ARR/DEP) (ARR-NE) (ARR-SW)	NEW YORK APP CON	KENNEDY TOWER Rwys 4R/22L and 13L/31R	GND CON	CLNC DEL	CPDLC
128.725 117.7 115.4	128.125 269.0	Rwys 4L/22R and 13R/31L	119.1 281.55 123.9 281.55	121.9 135.05 348.6 348.6	



ELEV 13	TDZE 13
---------	---------



1800	4000	LGA R-207	MOVFA	VGSI and ILS glidepath not coincident (VGSI Angle 3.00/TCH 54).
<p>* LOC only.</p> <p>ZULAB INT I-RTTH 5.3 RADAR</p> <p>MALDE INT I-RTTH 9</p> <p>CATOD INT I-RTTH 11.6</p> <p>314° 3000</p> <p>GS 3.00° TCH 42</p>				
<p>1.2 4.5 NM 3.7 NM 2.6 NM</p>				
CATEGORY	A	B	C	D
S-ILS 31R	212/18 200 (200-½)			
S-LOC 31R	440/24	428 (500-½)	440/40	428 (500-¾)
CIRCLING	640-1	627 (700-1)	680-1¾ 667 (700-1¾)	680-2 667 (700-2)

NE-2, 31 DEC 2020 to 28 JAN 2021

NE-2, 31 DEC 2020 to 28 JAN 2021