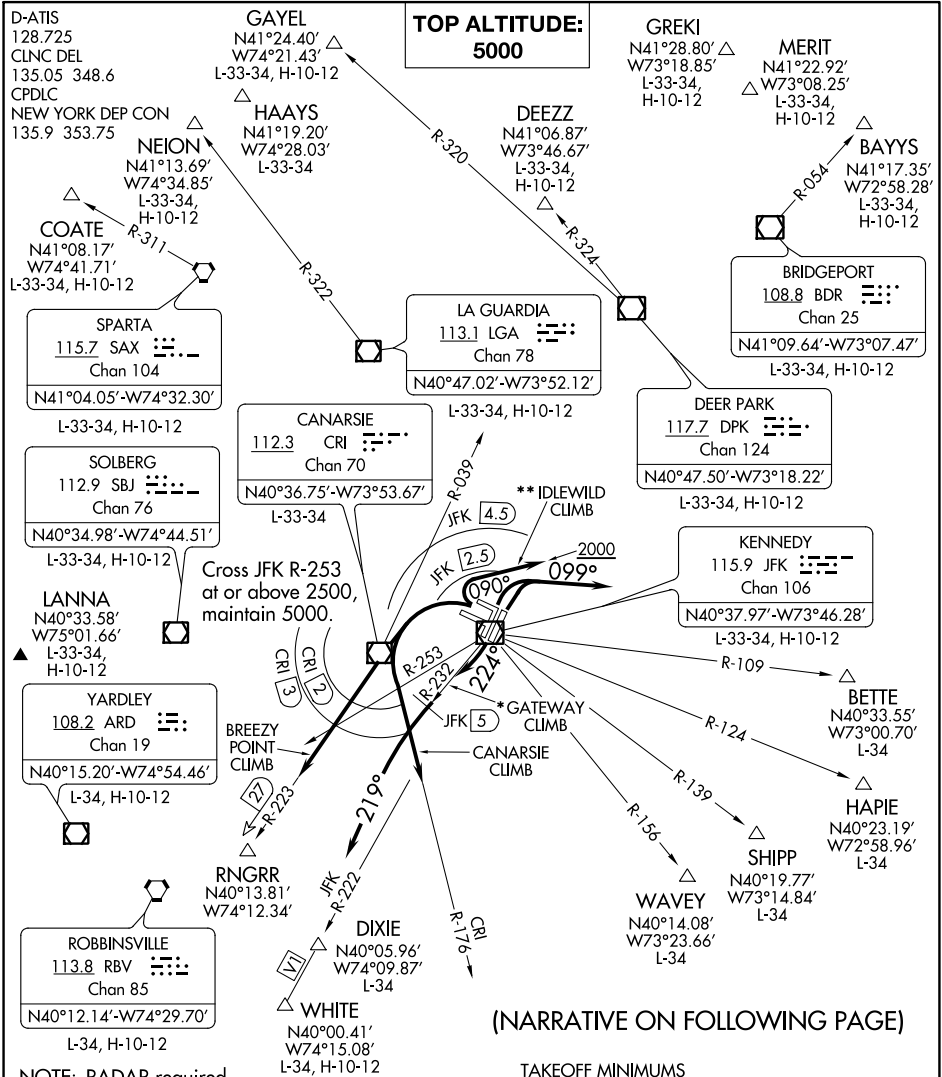


KENNEDY FIVE DEPARTURE

AL-610 (FAA)

JOHN F KENNEDY INTL (JFK)
NEW YORK, NEW YORK



(NARRATIVE ON FOLLOWING PAGE)

- NOTE: RADAR required.
- NOTE: BAYYS departures expect vectors to BDR VOR/DME or BDR R-054.
- NOTE: BETTE departures expect vectors to JFK R-109.
- NOTE: COATE departures expect vectors to SAX VORTAC or SAX R-311.
- NOTE: DIXIE departures expect vectors to JFK R-222.
- NOTE: HAPIE departures expect vectors to JFK R-124.
- NOTE: RBV departures expect vectors to RBV after RINGRR.
- NOTE: SHIPP departures expect vectors to JFK R-139.
- NOTE: WAVEY departures expect vectors to JFK R-156.
- NOTE: WHITE departures expect vectors to V1.

TAKEOFF MINIMUMS

Rwys 4L/R, 13L/R, 22L/R, 31L/R: Standard.

*NOTE: DME required. To be assigned during the period of 2200-0700 local.

**NOTE: To be assigned to non-turbojet aircraft. If unable to remain within JFK 2.5 DME, advise ATC.

NOTE: Chart not to scale.