

WAAS CH 45519 W31B	APP CRS 314°	Rwy Idg 8486 TDZE 13 Apt Elev 13
--	------------------------	---

RNAV (GPS) Y RWY 31R
JOHN F KENNEDY INTL (JFK)

RNP APCH.

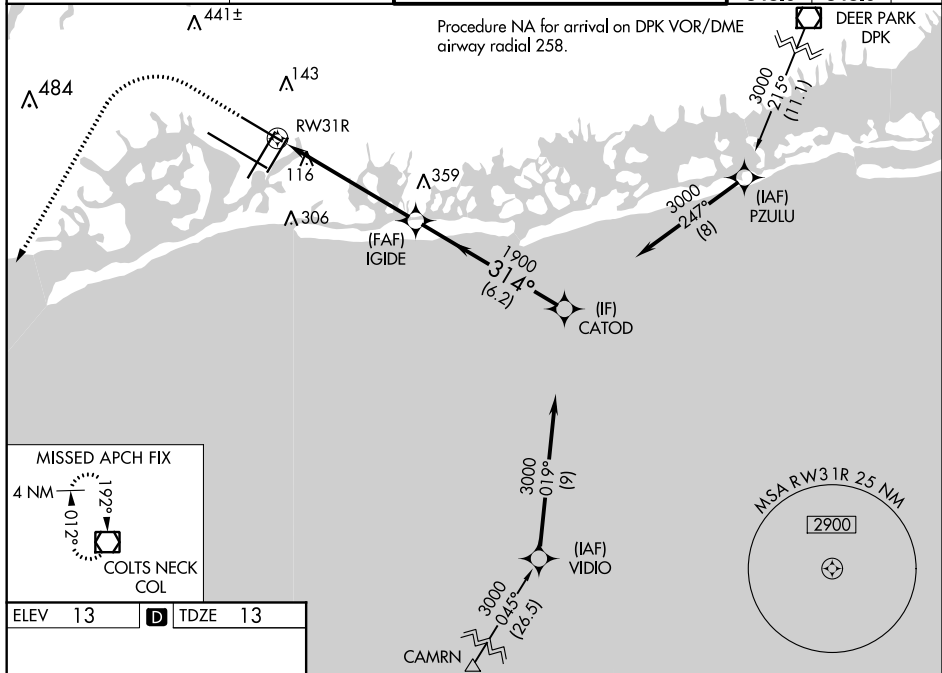
T Simultaneous approach authorized. For uncompensated Baro-VNAV systems, LNAV/VNAV NA below -12°C or above 54°C. Minimum altitude at CATOD 2000 when authorized by ATC. Use of FD or AP required during simultaneous operations. LNAV procedure NA during simultaneous operations. For inop ALS, increase LNAV/VNAV all Cats visibility to RVR 5500.

MALSR

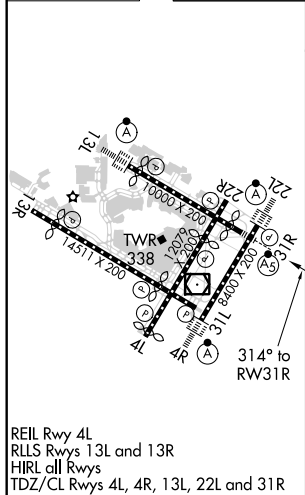


MISSED APPROACH:
Climb to 1800 then climbing
left turn to 4000 direct COL
VOR/DME and hold.

D-ATIS (ARR/DEP) (ARR-NE) (ARR-SW)	NEW YORK APP CON	KENNEDY TOWER		GND CON	CLNC DEL	CPDLC
128.725 117.7 115.4	128.125 269.0	Rwys 4R/22L and 13L/31R	119.1 281.55	121.9	135.05	
		Rwys 4L/22R and 13R/31L	123.9 281.55	348.6	348.6	



ELEV	13	D	TDZE	13
------	----	----------	------	----



VGS1 and RNAV glidepath not coincident
(VGS1 Angle 3.00/TCH 54).

CATEGORY	A	B	C	D
LPV DA		213/18	200 (200-½)	
LNAV/VNAV DA		369/35	356 (400-¾)	
LNAV MDA	460/24	447 (500-½)	460/45	447 (500-¾)
C CIRCLING	640-1	627 (700-1)	680-1¼ 667 (700-¾)	680-2 667 (700-2)