

VOR/DME JFK

115.9

APP CRS

052°

Rwy Idg

11010

TDZE

13

Chan

106

Apt Elev

13

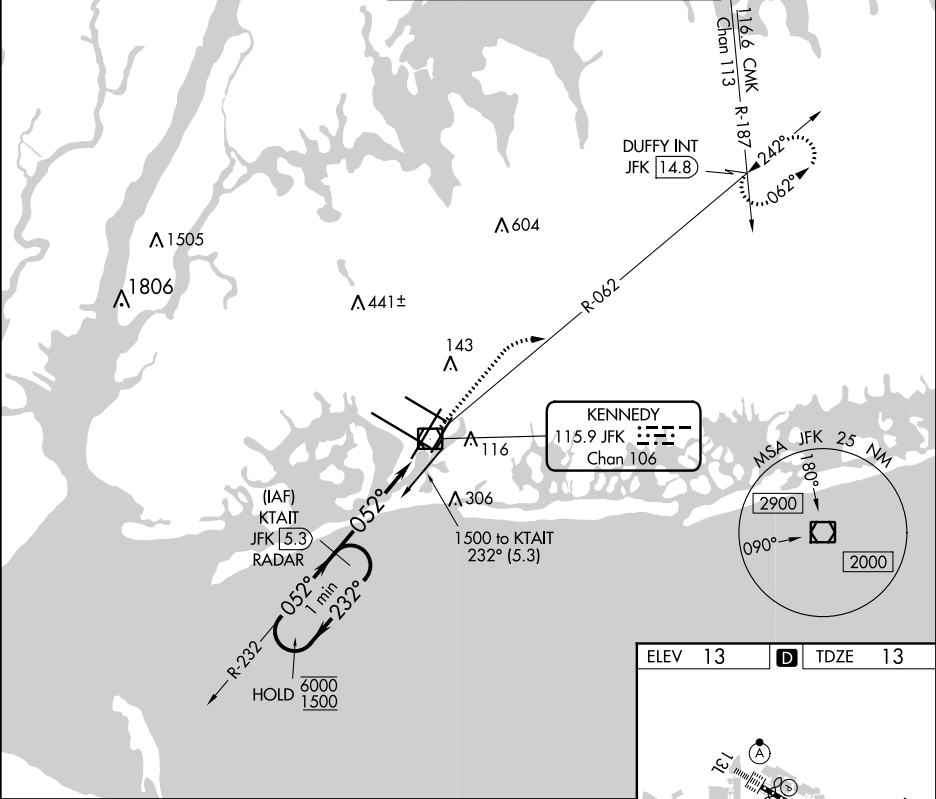
VOR RWY 4L

JOHN F KENNEDY INTL (JFK)

DME or RADAR required for procedure entry.

MISSED APPROACH: Climb to 2000 then climbing right turn to 3000 on JFK VOR/DME R-062 to DUFFY INT/JFK 14.8 DME and hold.

D-ATIS	NEW YORK APP CON	KENNEDY TOWER	GND CON	CLNC DEL	CPDLC
(ARR/DEP)(ARR-NE) (ARR-SW)		Rwys 4R/22L and 13L/31R			
128.725 117.7 115.4	128.125 269.0	119.1 281.55	121.9 348.6	135.05 348.6	
		Rwys 4L/22R and 13R/31L	123.9 281.55		



One Minute Holding Pattern

6000 ← 232°

1500 → 052°

VS and descent angles not coincident (VS Angle 3.00/TCH 75).

KTAIT JFK 5.3 RADAR

2000

3000

DUFFY INT

JFK R-062

052°

3.02° TCH 57

JFK 2.1

JFK 0.8

3.3 NM

1.2

CATEGORY	A	B	C	D
S-4L	480/55	467 (500-1)	480-1 ³ / ₈	467 (500-1 ³ / ₈)
CIRCLING	640-1	627 (700-1)	680-1 ³ / ₄ 667 (700-1 ³ / ₄)	680-2 667 (700-2)

FAF to MAP 4.5 NM

Knots 60 90 120 150 180

Min:Sec 4:30 3:00 2:15 1:48 1:30