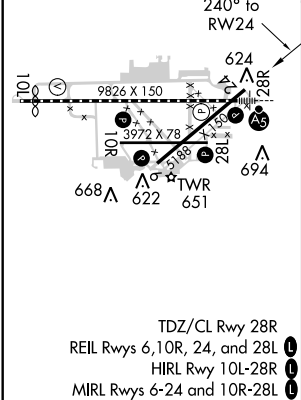
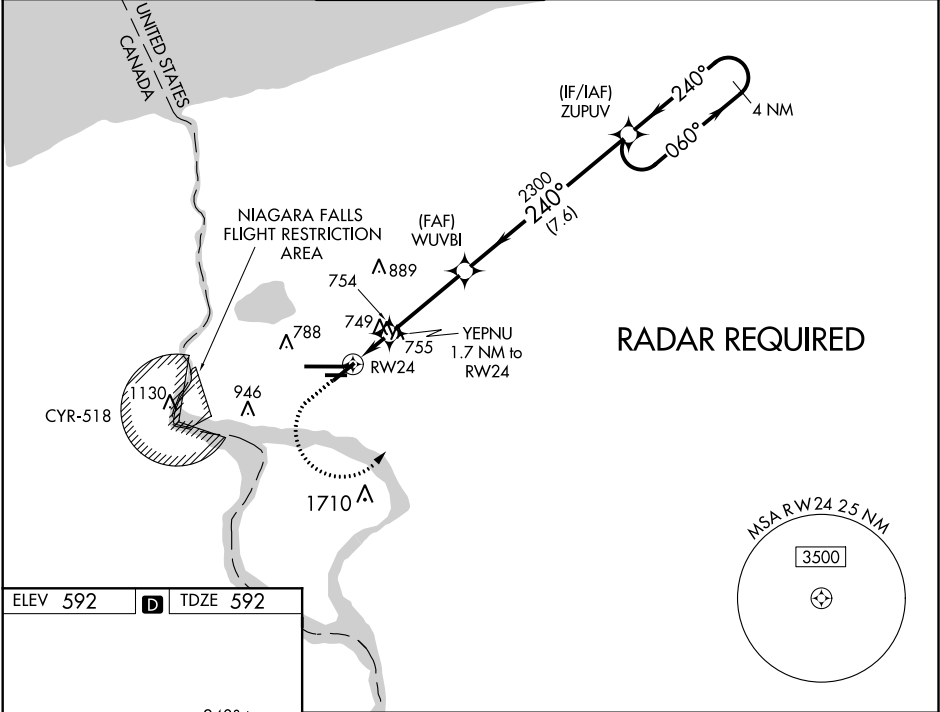


WAAS CH 45532 W24A	APP CRS 240°	Rwy ldg TDZE 592 Apt Elev 592
--	------------------------	---

RNAV (GPS) Z RWY 24
NIAGARA FALLS INTL (IAG)

<p>▼ DME/DME RNP-0.3 NA. When local altimeter setting not received, use Buffalo Niagara Int'l altimeter setting and increase all MDA 60 feet; increase LP Cats C and D visibility ¼ SM, LNAV Cats C and D visibility ½ SM, and Circling Cat C and D visibility ½ SM. Rwy 6, 10R, 24, 28L helicopter visibility reduction below 1 SM NA. Straight-in Rwy 24 NA at night, Circling Rwy 6, 10R, 24, 28L NA at night. *Missed approach requires a minimum climb of 265 feet per NM to 2120; if unable to meet climb gradient, see RNAV (GPS) Y RWY 24.</p>	<p>MISSED APPROACH: Climb to 1400 then climbing left turn to 3600 direct ZUPUV and hold.</p>
--	--

ATIS 120.8 269.4	BUFFALO APP CON 126.5 317.6	NIAGARA TOWER★ 118.5 (CTAF) 0 349.0	GND CON 125.3 275.8	CLNC DEL 119.25 251.1	UNICOM 122.95
----------------------------	---------------------------------------	---	-------------------------------	---------------------------------	-------------------------



1400 ↑	3600 ↷	ZUPUV ✳	4 NM Holding Pattern	